

## How to use Trimble GeoXT

**Note:** The GeoXT is a shared resource. Please do not use it to store personal information. When not in use the GeoXT should be charging in the support module.

1. Press the power button to turn on the GeoXT.

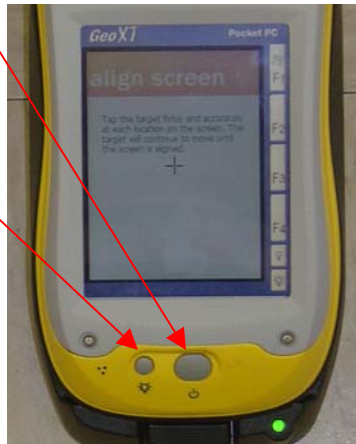


2. There are two options for changing the backlight settings on the Trimble GeoXT. First option is to press and hold the backlight button located beside the power button. The second option is to use the stylus or pen to adjust the backlight using the backlight touch buttons located under the “F4” button.



Darker  
Brighter

- If the GeoXT no longer responds to the stylus or pen you must realign the screen. To do this press both the backlight and the power button down at the same time, then follow the instructions on the screen.



- To select a program go to “Start”, then “Programs”, then select the program.



- The buttons on the side of the GeoXT are preconfigured touch buttons. These buttons when tapped will open preassigned programs.

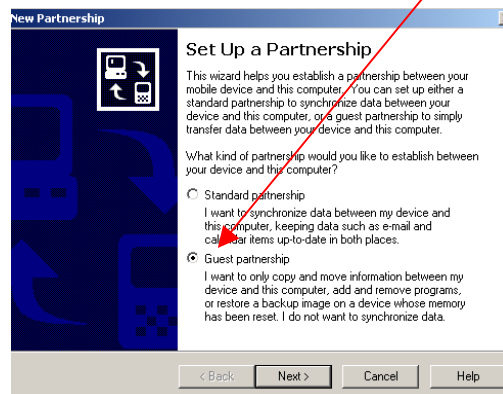
| Button | Programs                               |
|--------|--|
| F1     | GPS Controller                         |
| F2     | Power Settings                         |
| F3     | Memory Manager                         |
| F4     | Bluetooth wireless technology settings |

6. To download/upload information from/to the GeoXT and a PC set the GeoXT in to the support module. Then attach the USB data cable in to the support module and a USB port of the computer. The computer must have ActiveSync on the computer. The agriculture, biology, chemistry, geology, marine science, and computers in K 274 have Microsoft ActiveSync loaded on them.



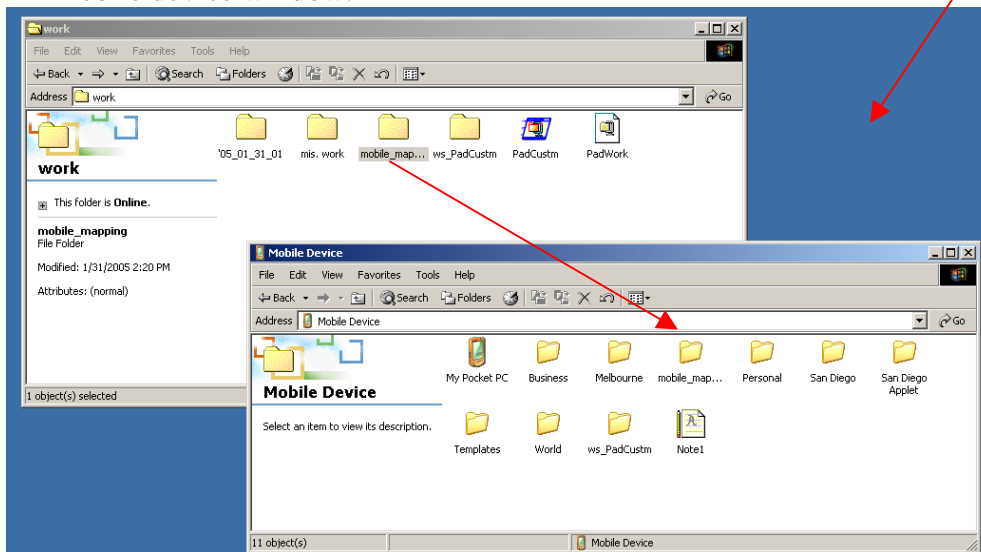
Note: If the computer fails or recognize the GeoXT try switching USB ports. If this does not work try to activate the sync from the GeoXT by tabbing to Start ⇨ Programs ⇨ ActiveSync ⇨ Activate Sync. If none of the above makes sure the computer has Active Sync loaded on it and switch computers.

7. Then activate the ActiveSync; it should come up on the computer when the GeoXT is plugged into the computer. On the SDAL computers set sync as “Guest partnership”.



Note: If ActiveSync does not start up automatically, double click on “My Computer” icon, then “Mobile Devices”, and that should start up the ActiveSync.

- To copy data from a computer to the GeoXT double click on the “My Computer” icon then navigate through the “My Computer” window to the information that you wish copy to the GeoXT. Minimize the window. Then double click on the “My Computer” icon again and then clicking on the “Mobile Devices” icon. Next maximize the first screen and resize both screens so they can be seen together. Then drag or copy the information from the computer to the mobile device window.



- Enjoy and have fun using GeoXT