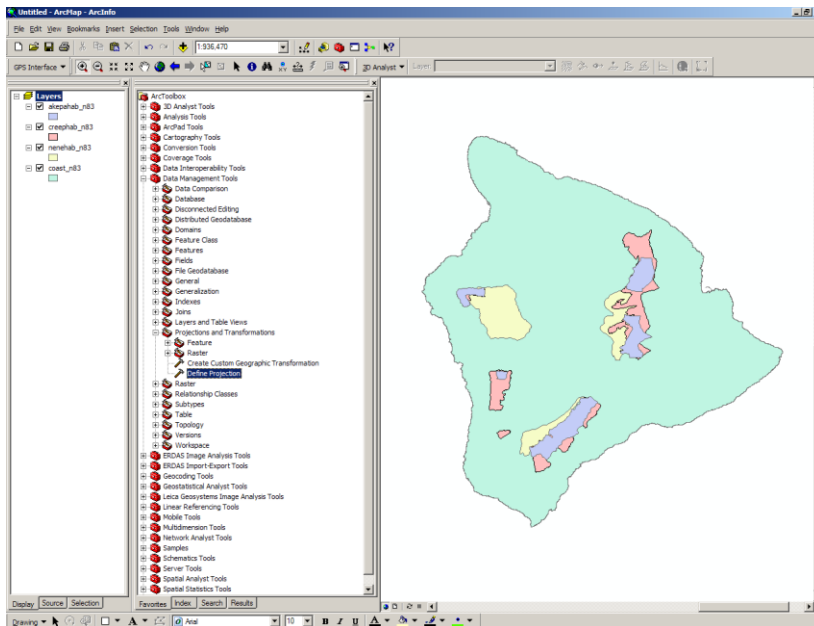


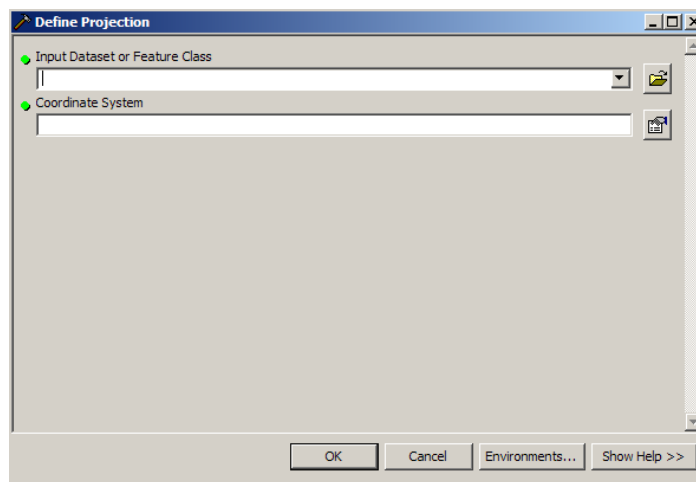
How to Re-Project a Shapefile using ArcToolbox in ArcMap

How to Define the Projection for a Shapefile

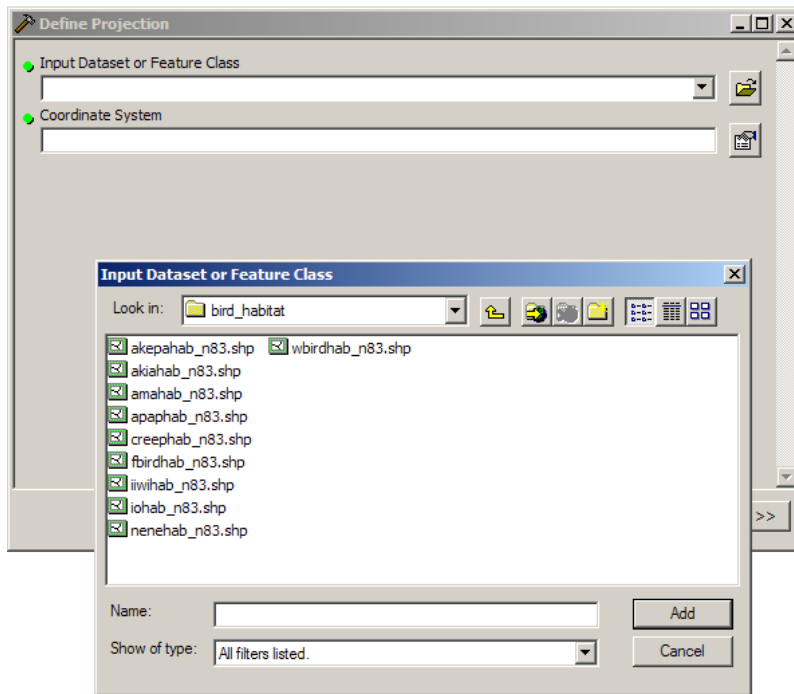
Launch ArcMap and Click on the ArcToolbox icon on the “Standard” Toolbar. The ArcToolbox menu will become visible adjacent to the Layers display area. Navigate to and expand the Data Management Tools heading. Scroll down to the Projections and Transformations heading. Select Define Projection, double-click.



The Define Projection dialog window will come up.



Click on the **Input Dataset or Feature Class** browse button and select the files you want to re-project



Next, click the **Coordinate System** browse button and the spatial reference properties dialog will come up. From here click on the **Select** button and pick your coordinate system.

