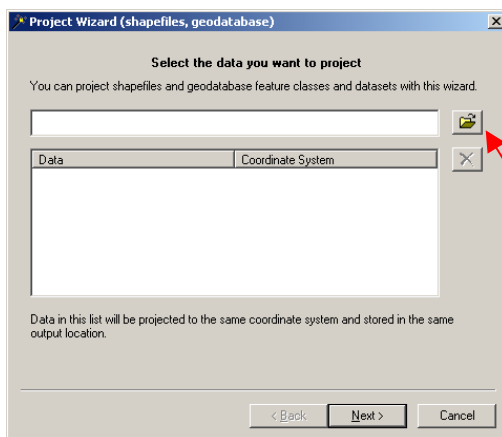
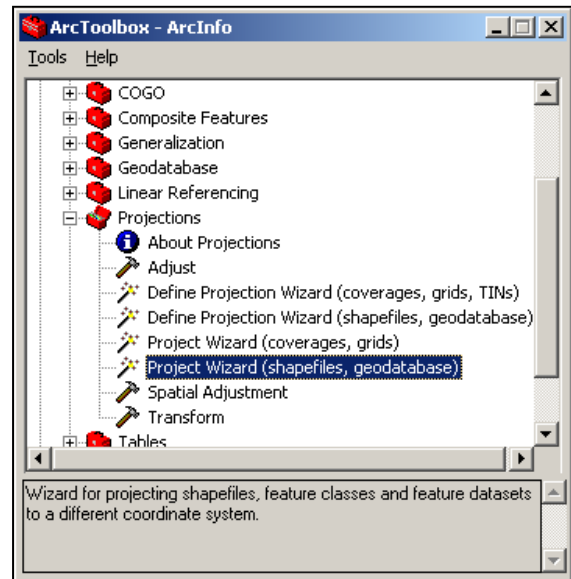
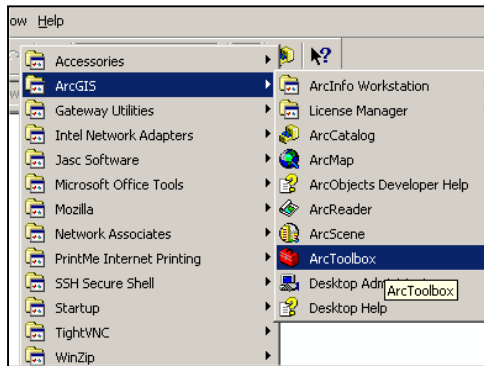
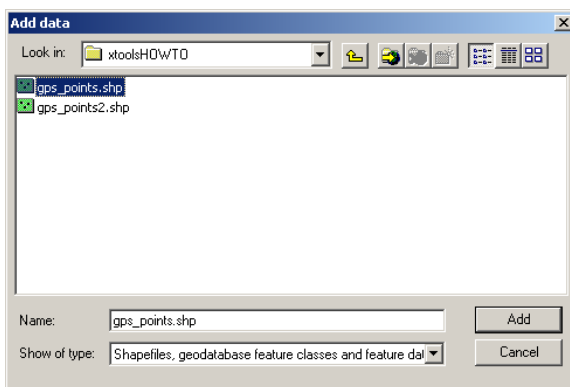


# How to Re-Project a Shapefile using the Projection Wizard in ArcToolbox

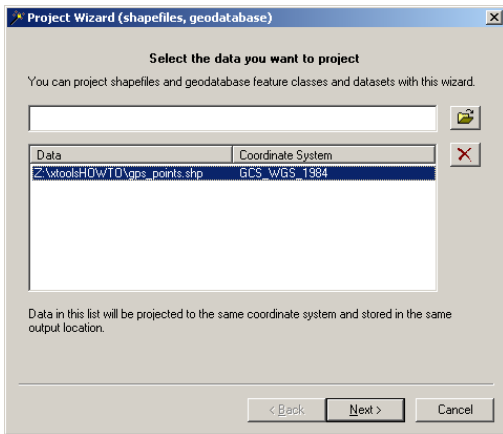
Open ArcToolbox, and navigate to **Data Management Tools=> Projections=> Project Wizard for shapefiles and geodatabases.**



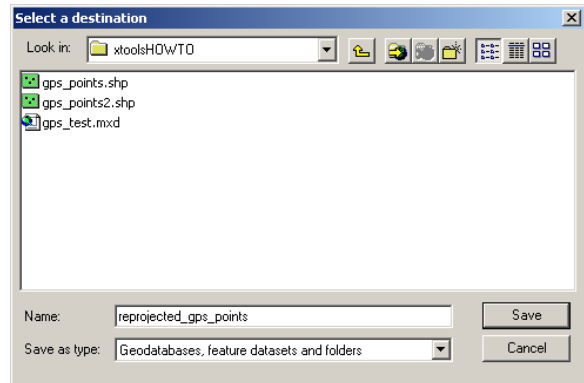
Double click the Project Wizard to bring up this window.



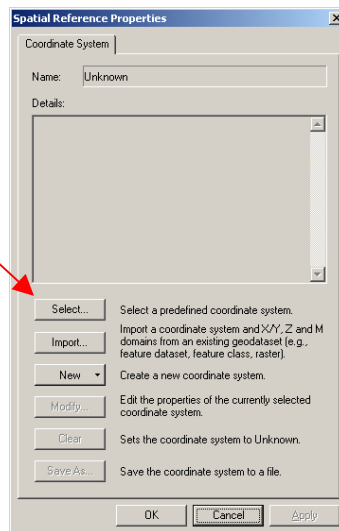
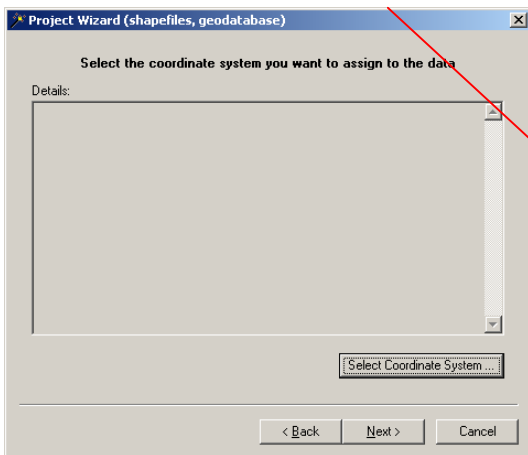
Click this folder icon, and you will be prompted to select the shapefile that you want to re-project to another coordinate system.



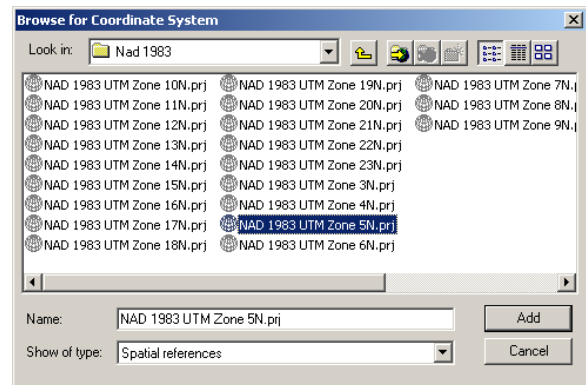
**Highlight the file, and click on next to continue.** You'll be asked to specify a destination where you want the new file to be created, and what you want the new file to be named as.



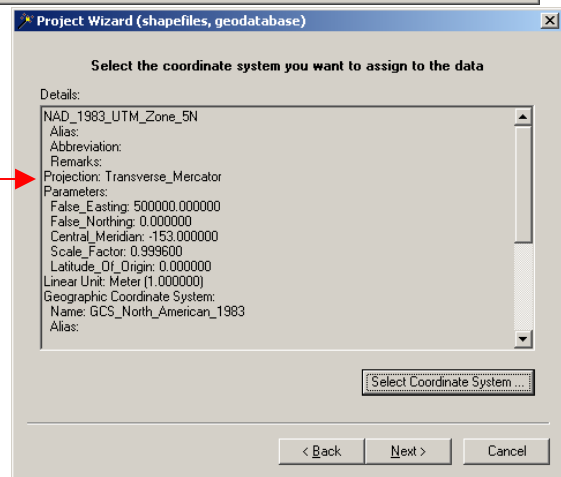
Next, you will be able to select the coordinate system for the reprojected shapefile.



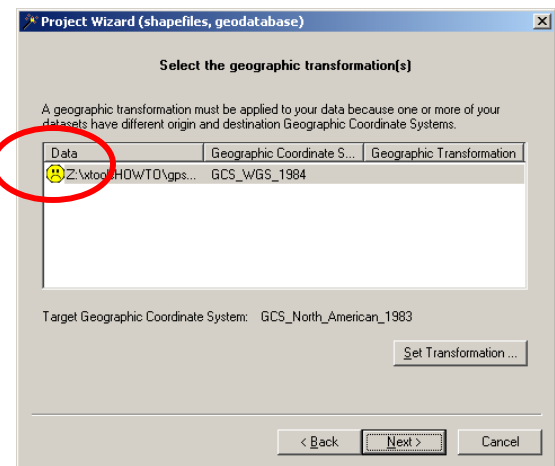
Browse for the coordinate system you want to use. In this case, Nad1983, UTM Zone 5 was chosen. This one was found by navigating to **Projected Coordinate Systems => Utm => Nad 1983 => NAD 1983 UTM Zone 5N**. (Your path will vary depending on which Coordinate System you wish to use)



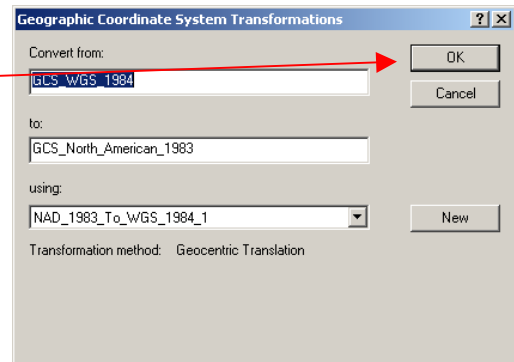
You can then click apply and then OK to select a coordinate system for the new shapefile. After you have applied the changes, the Projection Wizard window will appear, and the coordinate system to be used in the new file will be listed here.



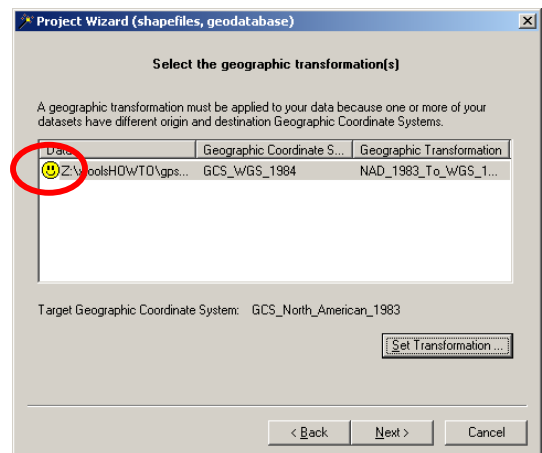
If this is the coordinate system that you want to use, **click next to continue**. A new window will popup that says you need to apply a transformation to the data. Your new file will be listed with a frowning face next to it indicating that there is a problem. **Click on Set Transformation**



This window will popup showing the transformation that will take place. **Click OK**

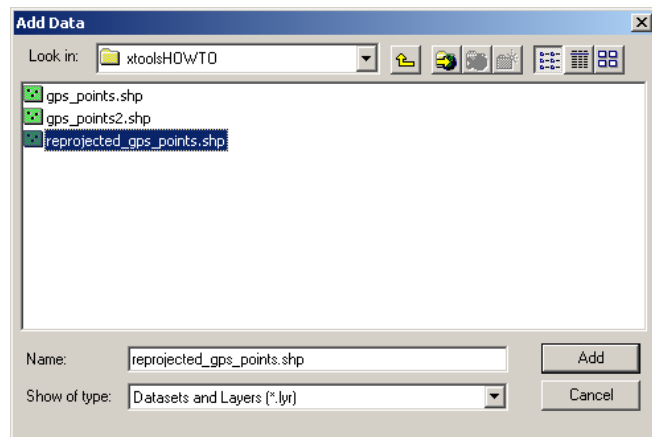


The Project Wizard window will popup again, but this time there will be a smiley face indicating that the problem has been fixed. **Click Next to continue.**



Keep the default settings for the next windows unless you know that they need to be changed. Keep clicking next, and eventually finish, to write the newly projected file to your folder. When you are finished you can close ArcToolbox.

**Add the new shapefile to ArcMap.**



Now that you have the new re-projected point shapefile, you no longer need the old one with the wrong coordinate system. Right click on it, and choose to remove it.

