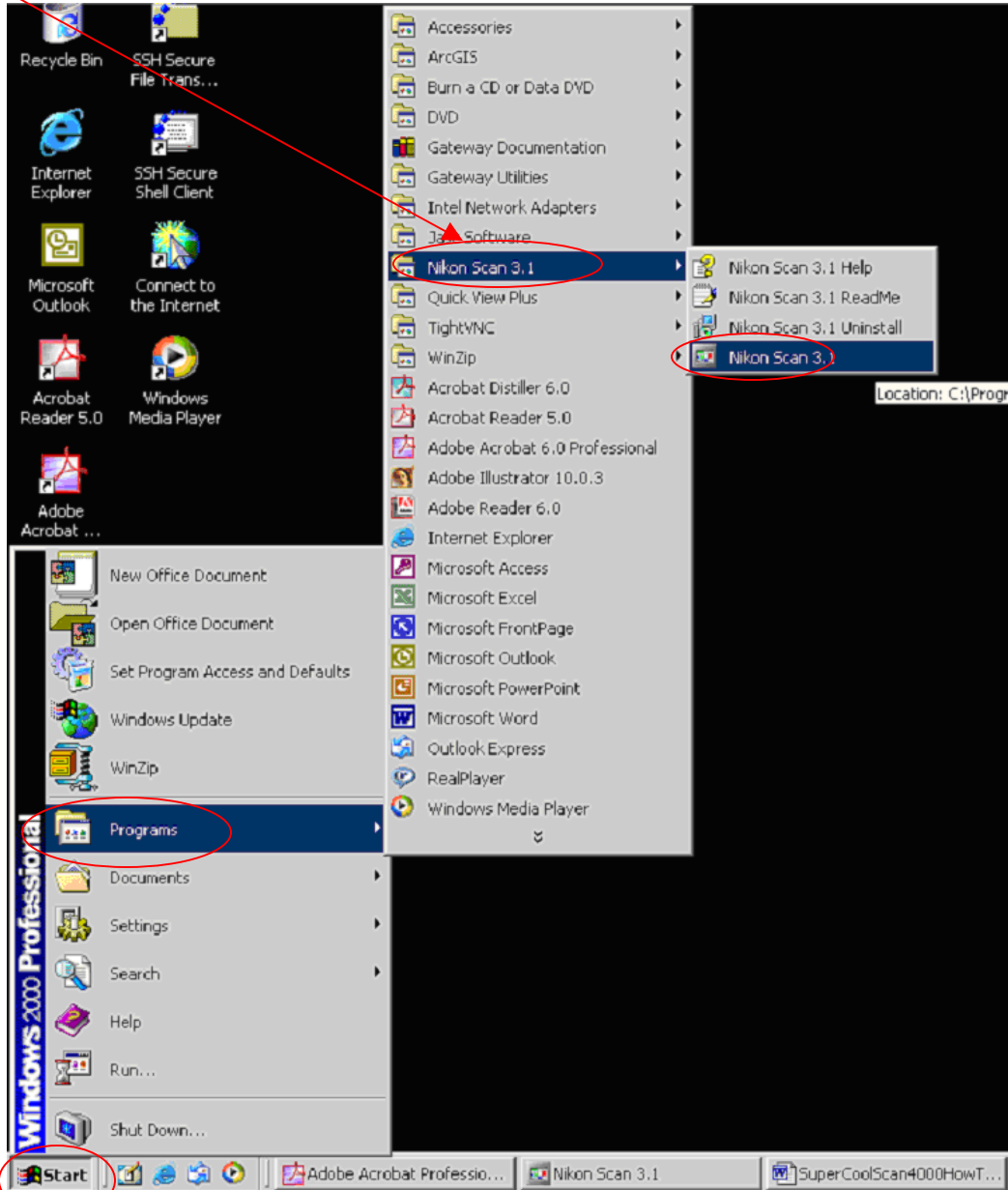


How-To use a Nikon Super CoolScan 4000

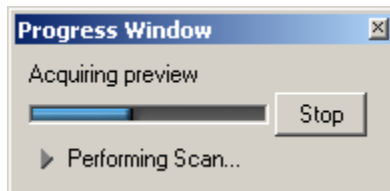
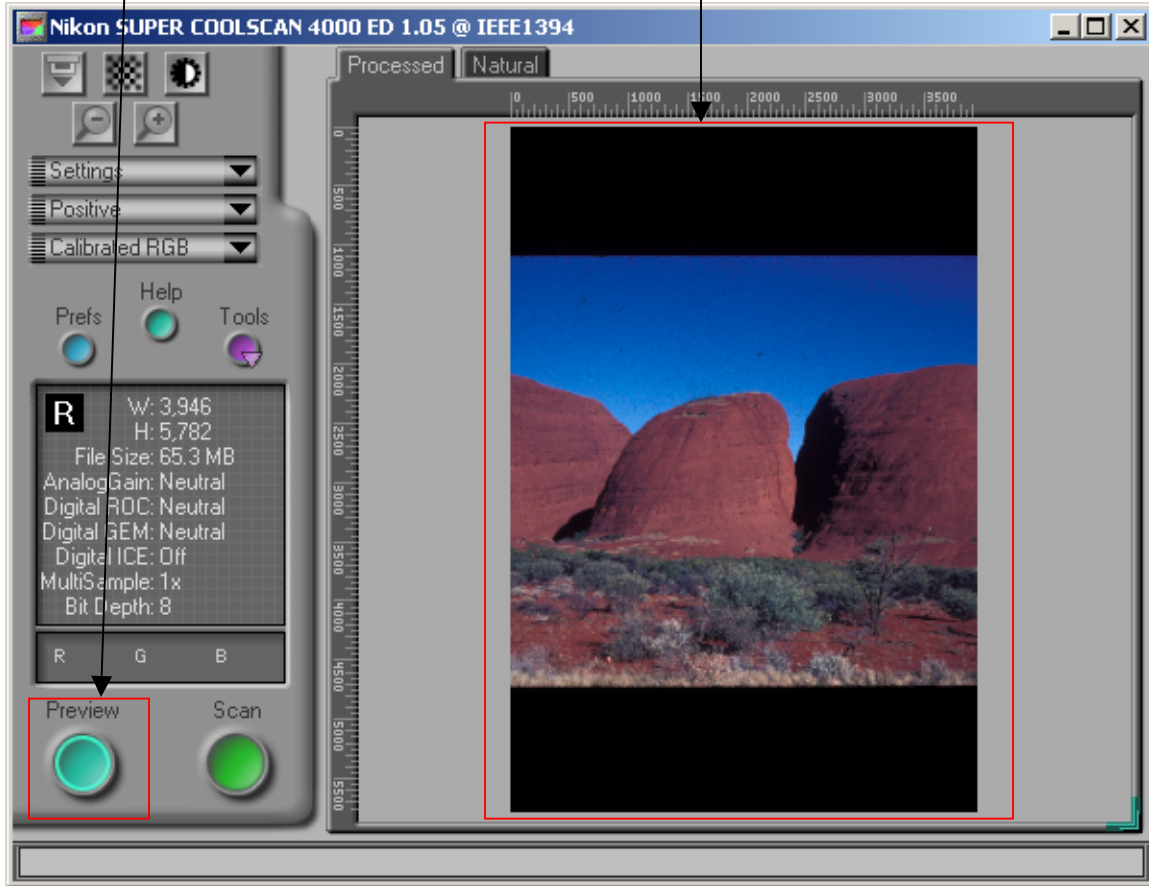
1. Open Scan window
 - Click Start → Programs → Nikon Scan 3.1 → Nikon Scan 3.1



2. Insert Film into the film-reader. Check the pictures for more information.



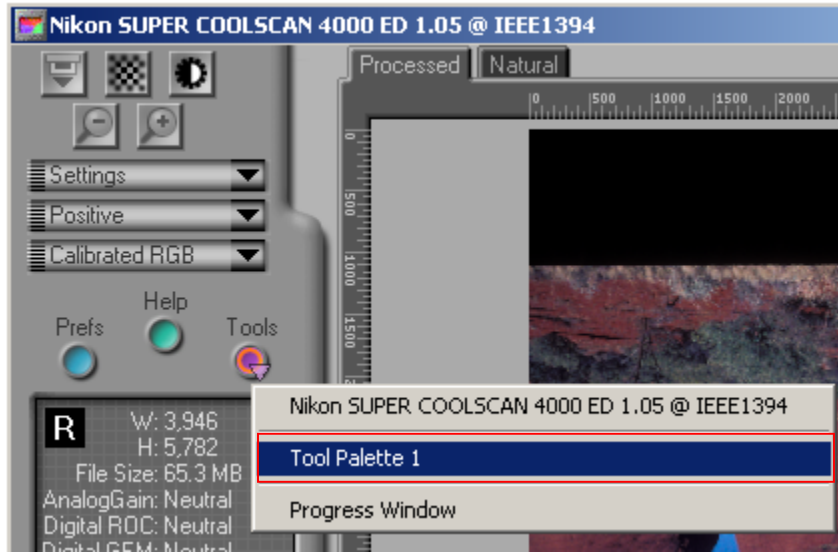
3. Click **Preview** button to allow you to view the image to be scanned in the preview area.



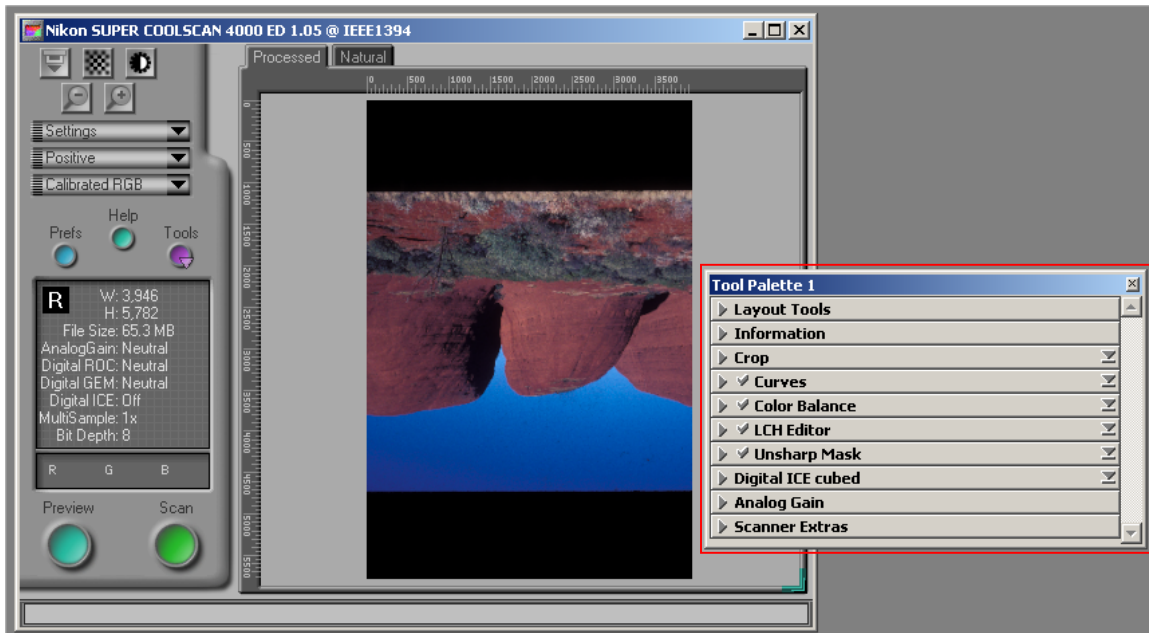
4. Adjust Settings

- Use the tools in the scan window and tool chest to adjust settings and enhance pictures before scanning. Click Tools → Tool Palette 1



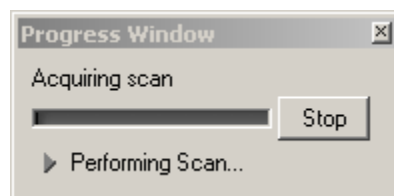
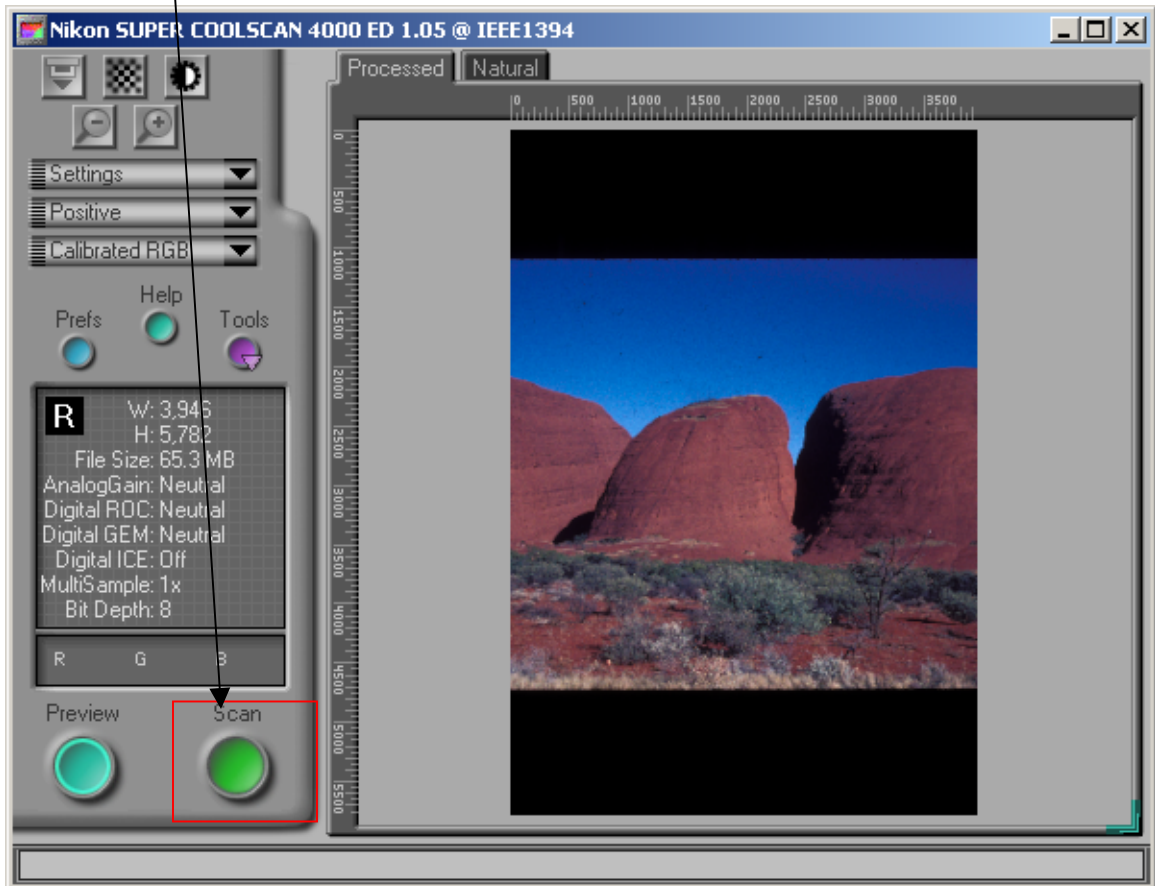


- The tools in the tool palette can be used before scanning to select the area to scanned, rotate, and flip image, specify size and resolution, adjust color, brightness, and improve contrast, improve sharpness and mitigate the effect of dust, scratches and fading.



5. Scan

- Click the **Scan** button to scan the images.



- Note: The image will then be opened in the host application Nikon Scan 3.1

6. Save Image

- Click the save button (a button looking like a floppy) to save the image.



- Alternative way of saving the image: click the File menu and then the Save option

