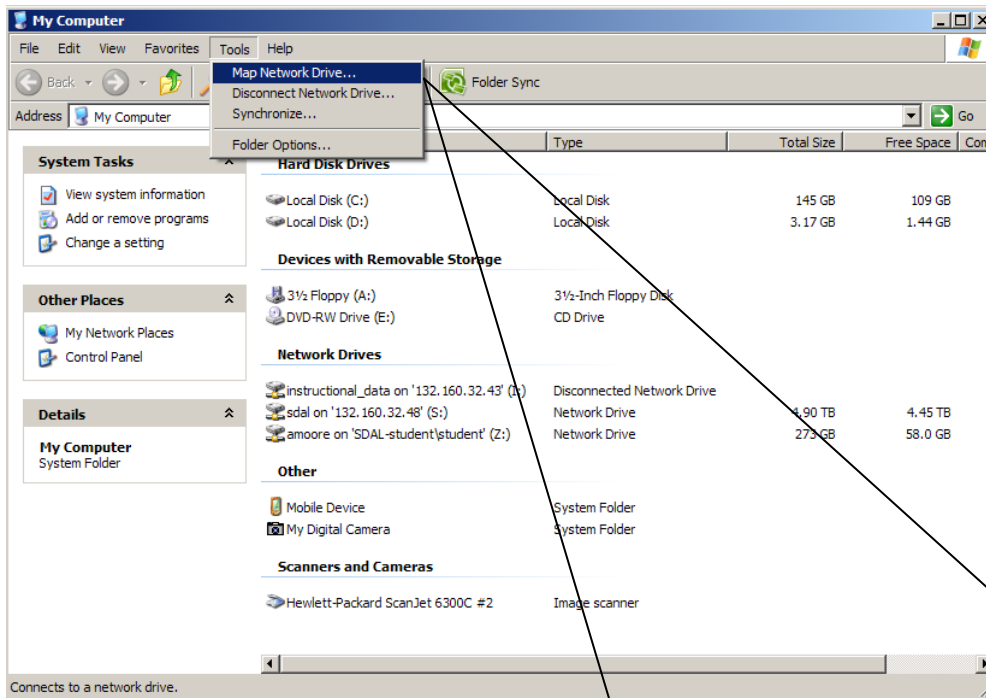


## How-To map to a Network drive

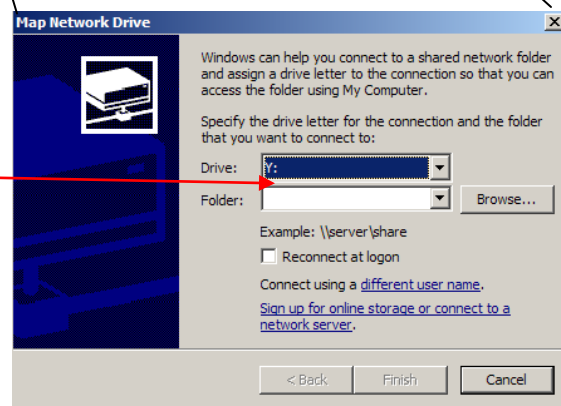
If you use Windows 2000 on a local area network (LAN), and you save and open files in shared folders as part of a workgroup on a server, you can create a virtual drive whose drive letter appears in the My Computer window along with those of your local drives — a process referred to as *mapping a network drive*.

To map a network drive from an SDAL computer (GIS-Labs login), follow this process:

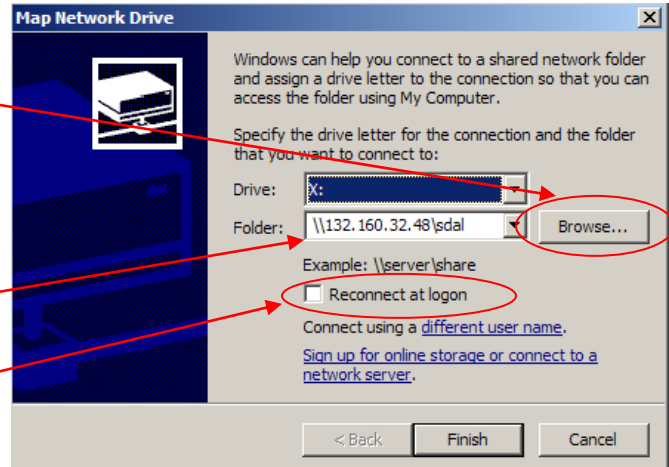
Go to My Computer and click on the Tools heading, select Map Network Drive.



The Map Network Drive dialog will come up. Click the Drive drop-down list button and select the drive letter you want to assign to the virtual drive containing this network folder.



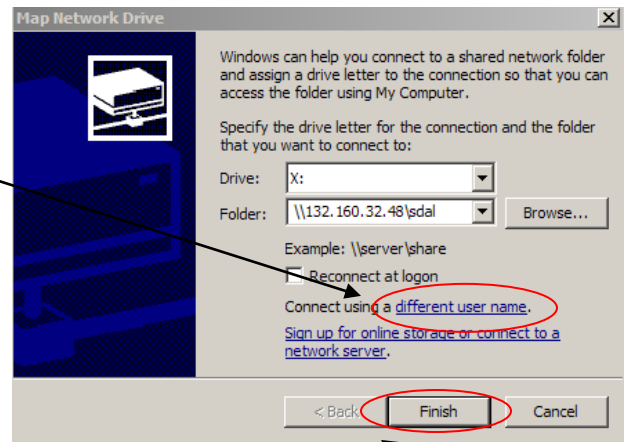
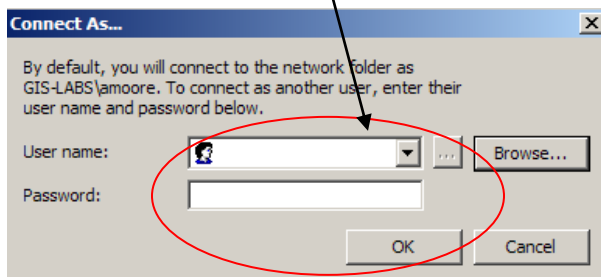
Type the path to the folder on the network drive in the Folder text box or click the Browse button and select the folder directly from the outline of the network drives and folders shown in the Browse For Folder dialog box. Now click **OK** to close the Browse For Folder dialog box and return to the Map Network Drive dialog box (where the path to the selected folder now appears).



If you only want to use this drive designation during the current work session, leave the Reconnect at Logon check box unchecked. If you want Windows to recreate this virtual drive designation for the selected network folder each time that you start and log on to your computer check this box.

If you're mapping the network drive for someone else who uses a logon different from your own, click the Different User Name hyperlink

Enter the user name and password in the associated text boxes in the *Connect As dialog* box before you click **OK**.

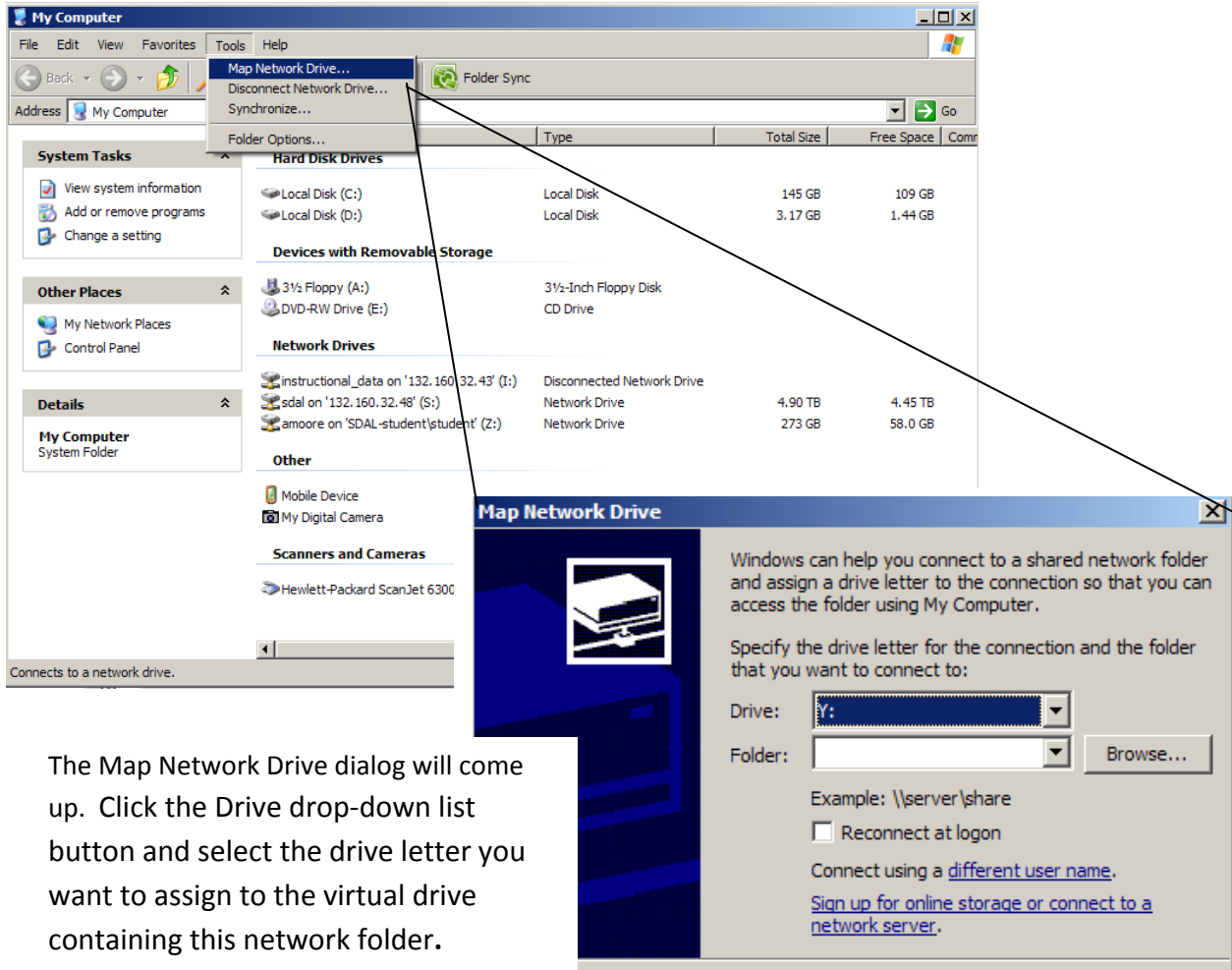


Click the **Finish** button in the Map Network Drive dialog box to close it and return to the *My Computer* window.

After mapping a network folder onto a virtual drive, you can redisplay the contents in the *My Computer* window by double-clicking that drive icon.

To map a network drive from an on campus computer using UHHL login, follow this process:

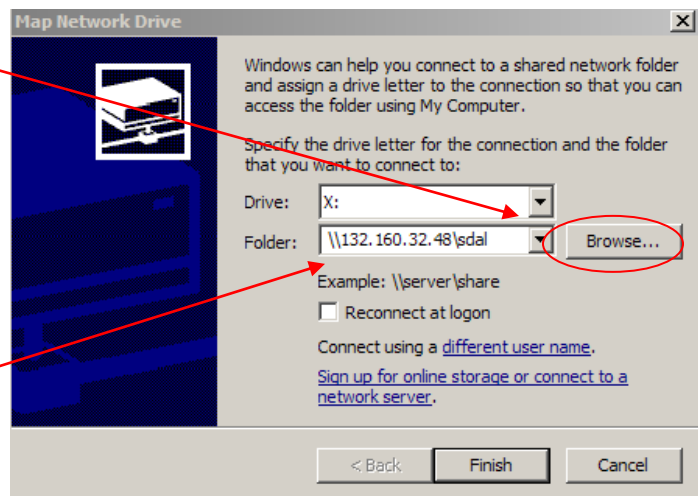
Go to My Computer and click on the Tools heading, select Map Network Drive.

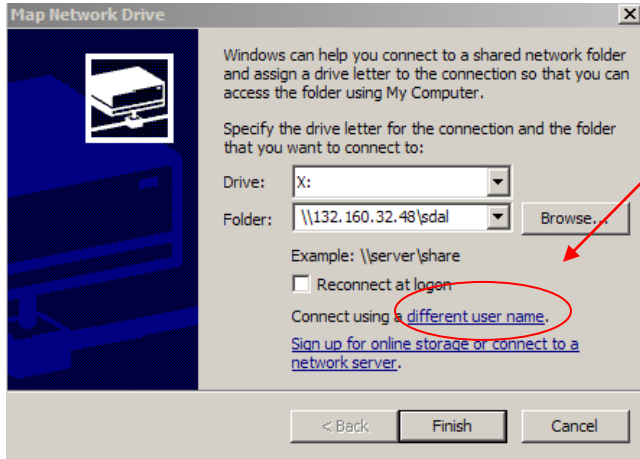


The Map Network Drive dialog will come up. Click the Drive drop-down list button and select the drive letter you want to assign to the virtual drive containing this network folder.

Type the path to the folder on the network drive in the Folder text box or click the Browse button and select the folder directly from the outline of the network drives and folders shown in the Browse For Folder dialog box.

Now click **OK** to close the Browse For Folder dialog box and return to the Map Network Drive dialog box (where the path to the selected folder now appears).





To access the GIS-Labs network drive from a UHHL login, click the Different User Name hyperlink

Enter the user name and password in the associated text boxes in the *Connect As dialog* box before you click **OK**.

