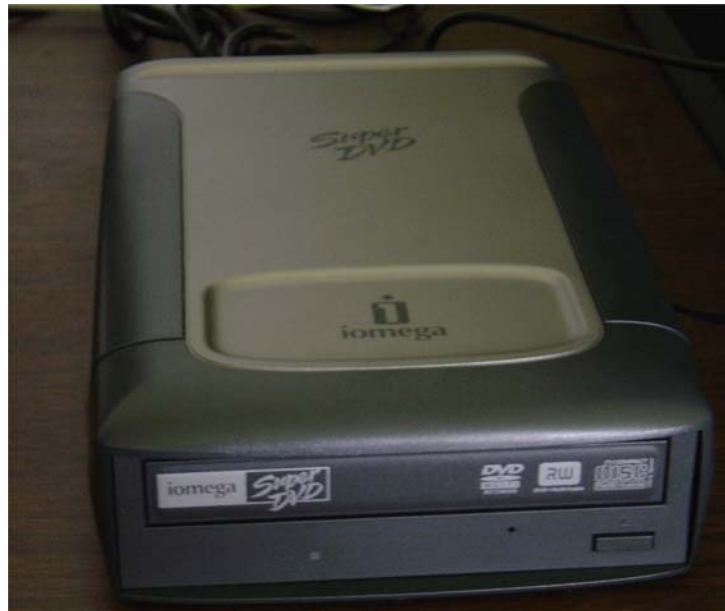


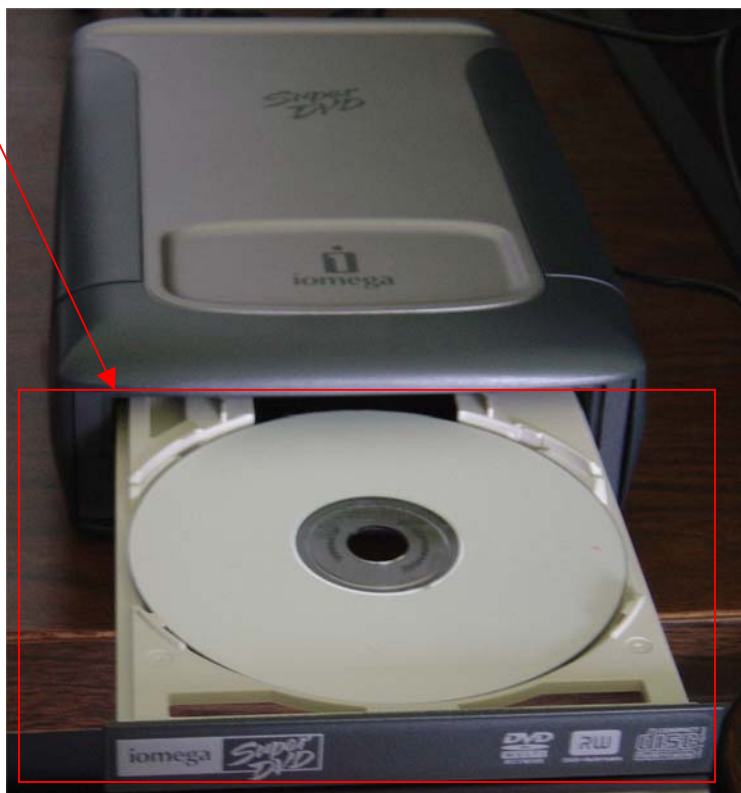
## How to use Iomega Super DVD Writer



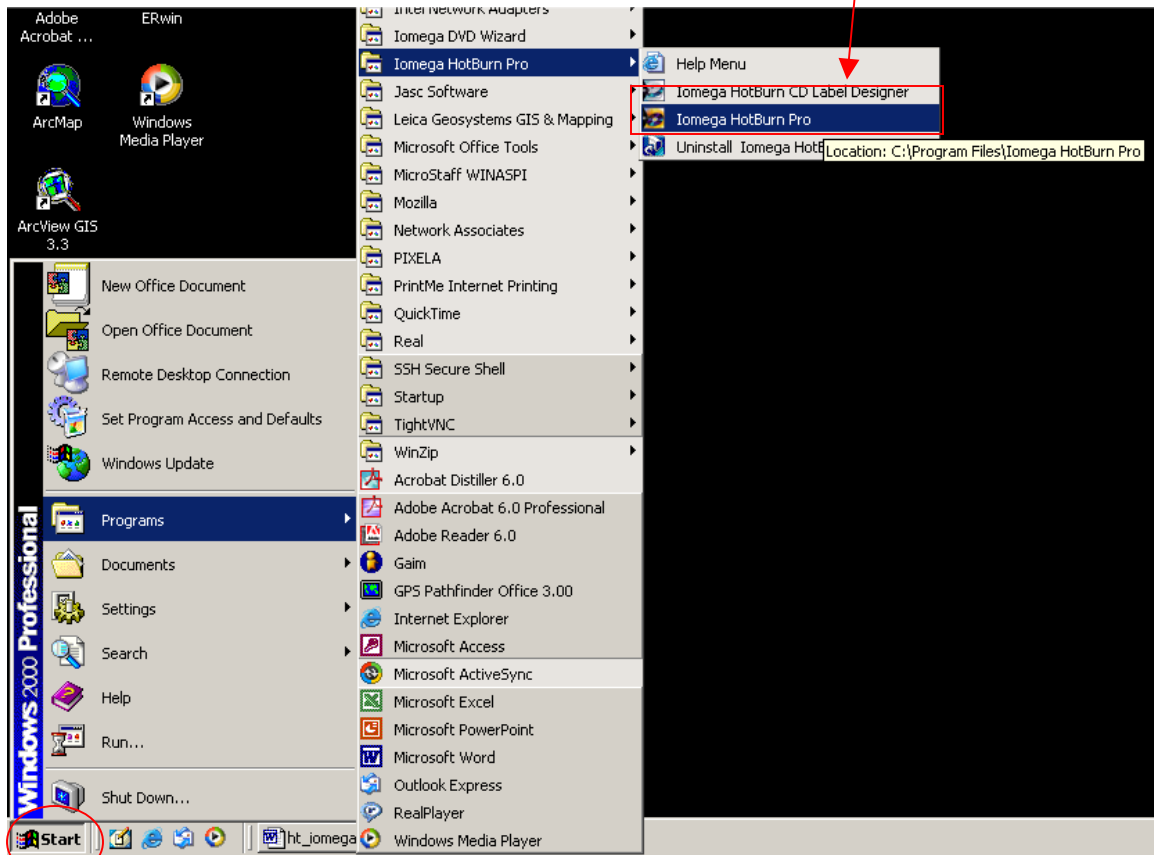
First, connect the USB cable from the DVD Writer Device to one of your PC's USB ports. Then, connect the DVD Writer to a power outlet using the other cable in the box.



1. Insert the DVD-R/DVD-RW or CD-R/CD-RW to the drive.



2. Click Start → Programs → Iomega HotBurn Pro → Iomega HotBurn Pro



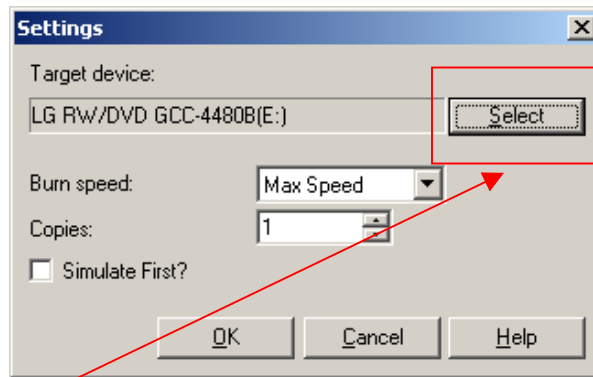
3. On HotBurn Pro, you can burn Music CDs, Data Disc, MP3 disk or copy another disk. You can also back up your data. To do any of these click the Data Disc button.



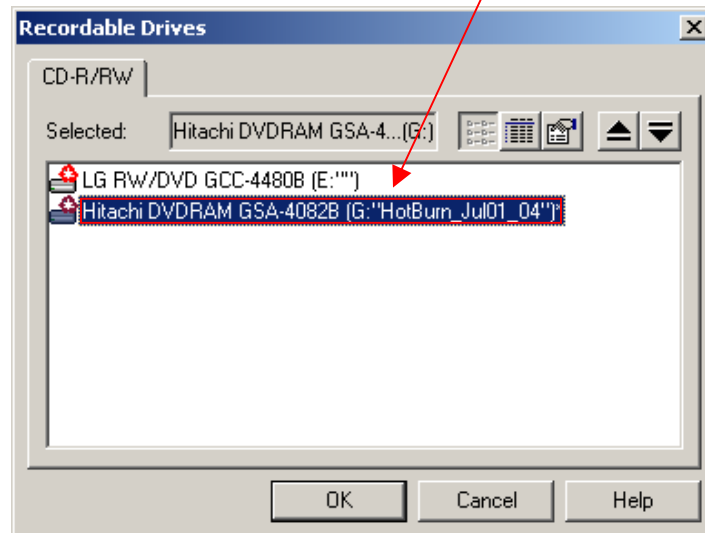
- a. Before you start, click the **Settings** button to make sure that you are using the proper target device drive to burn the CD or DVD.



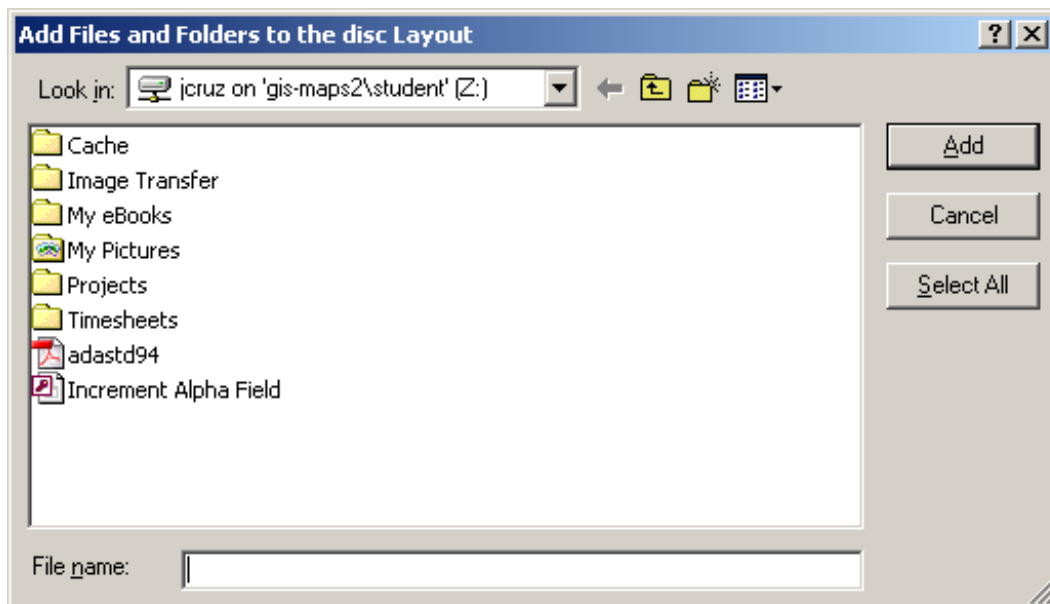
A **Settings** Dialog box will appear.



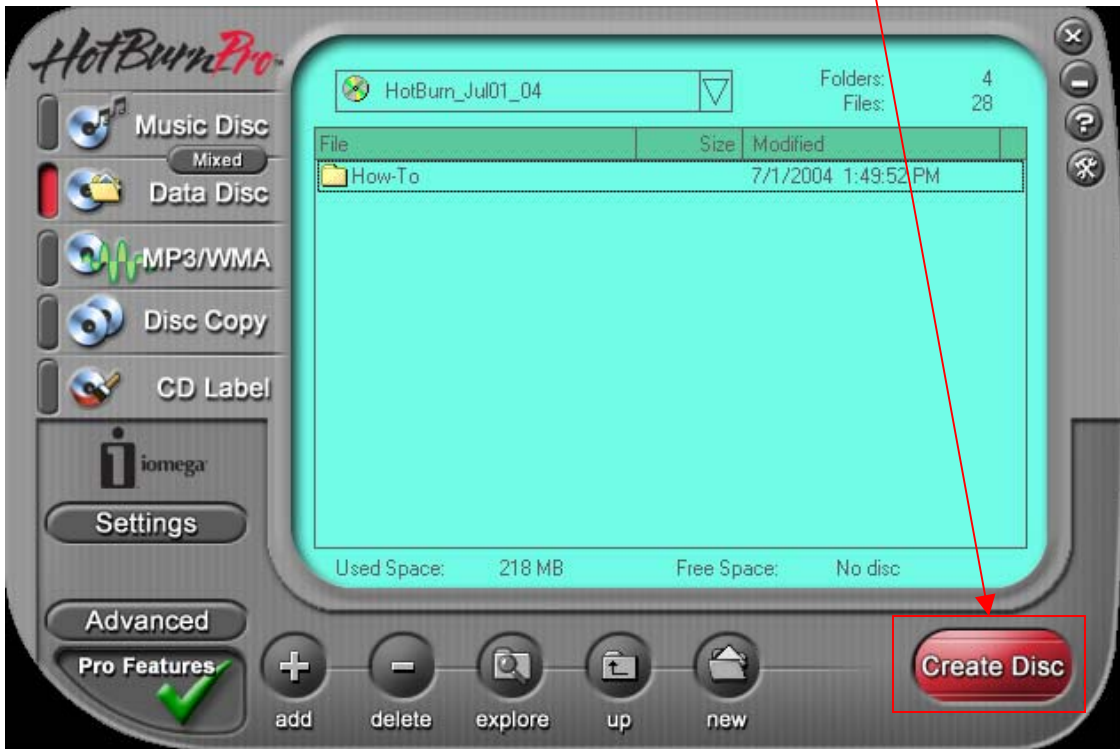
If the target device selected is different than **Hitachi DVDRAM-4082B**, click **Select**, to change it. Then a **Recordable Drive** dialog box will appear that will allow you to choose which recordable drive to use. After the selection has been made, press **OK**.



4. Click the **Add** button to add the files to be burned. After clicking the Add button, Dialog box will pop up that will allow you to choose the files you want to add, once you are done choosing the files you want to add, click **Add** button on the dialog box.



- Once you have selected the files you want to copy to the disc, click **Create Disk** to start burning the disc.



- Wait for the disc to complete burning and you are done. If you want to abort burning the CD/DVD, click the **Abort** button on the bottom right.

