

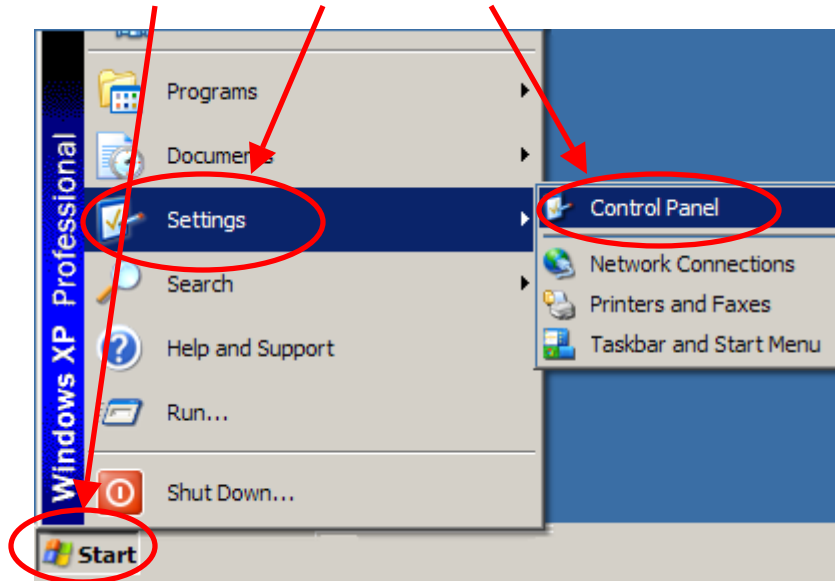
# How to Install the Hawaiian Keyboard in Windows XP

\*\*\* Note: You must repeat this process with every login.

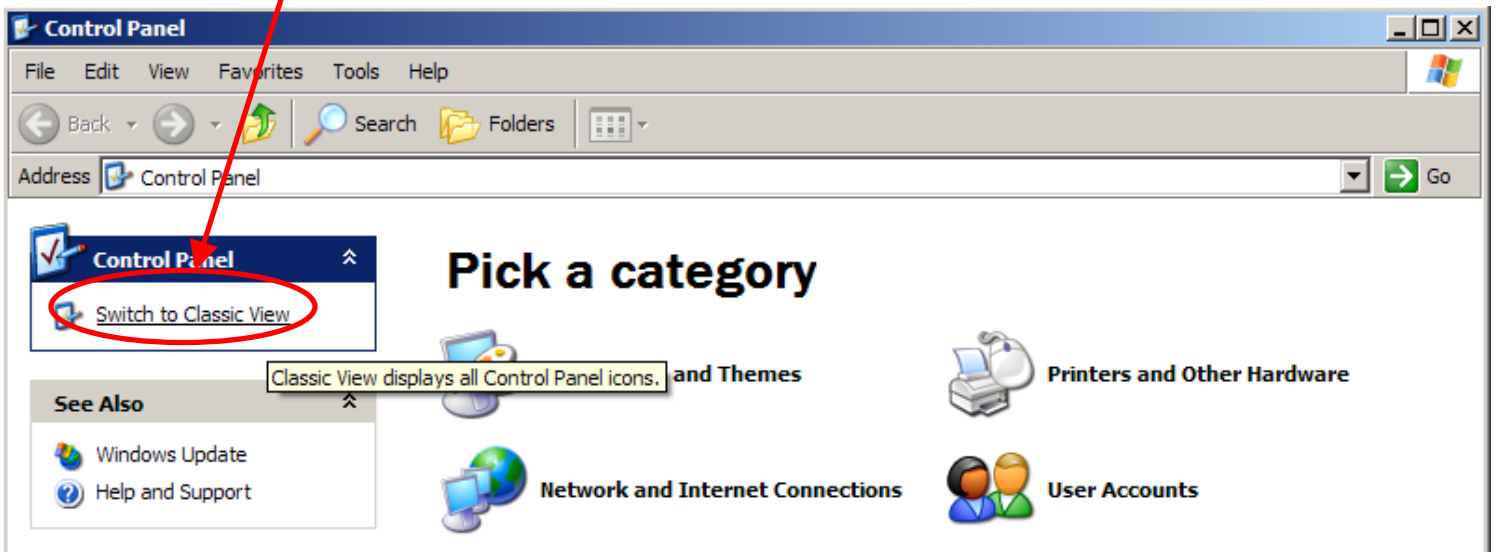
\*\*\*\*If you are using your own computer, please go to the following website to download the Hawaiian Font: <http://www.olelo.hawaii.edu/enehana/winkbd.php>

This how-to describes the process of getting the Hawaiian Keyboard to work. In this document we will later use Microsoft Word to illustrate how to type in Hawaiian.

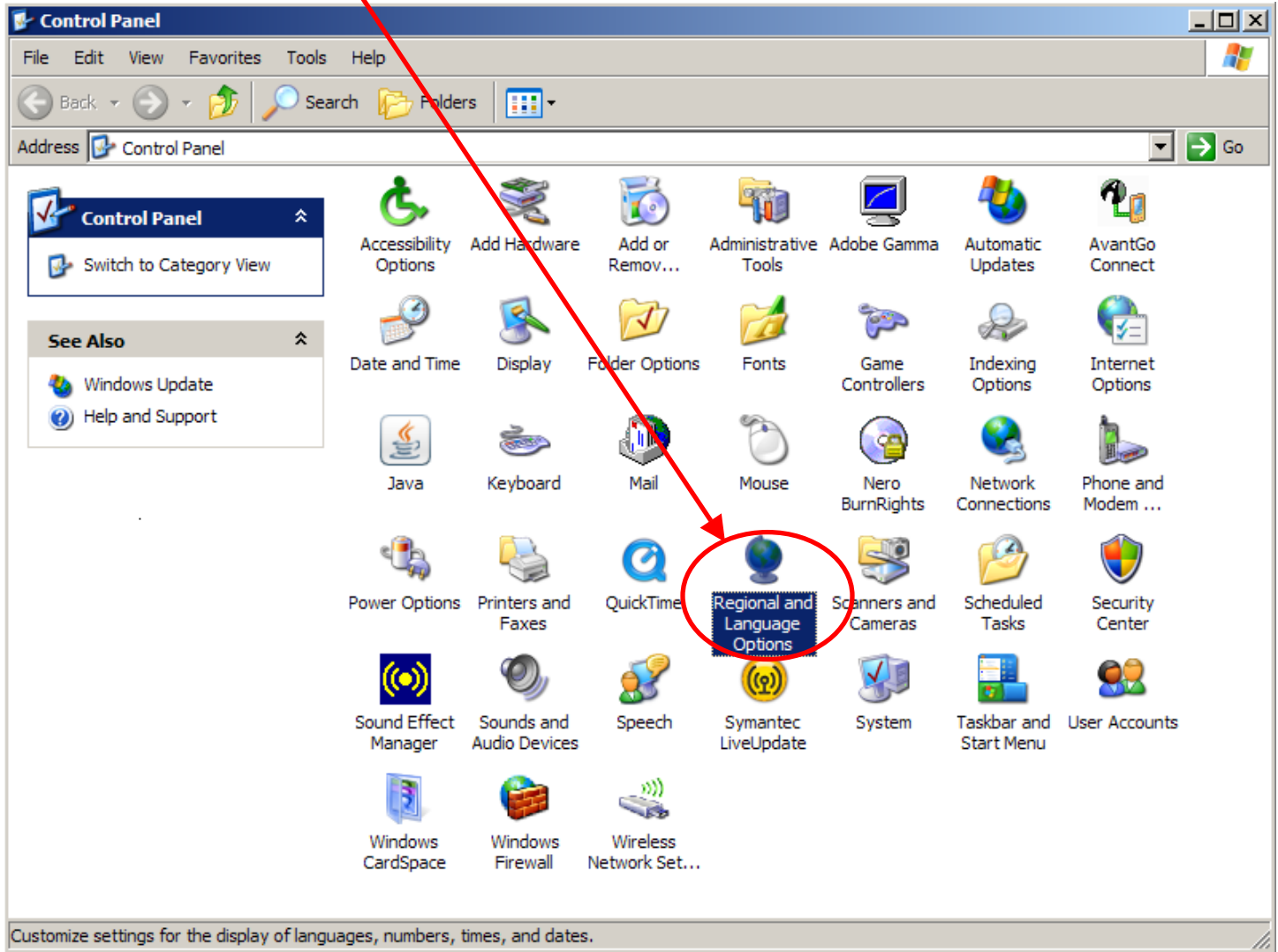
1. Open the *Control Panel* (*Start* → *Settings* → *Control Panel*)



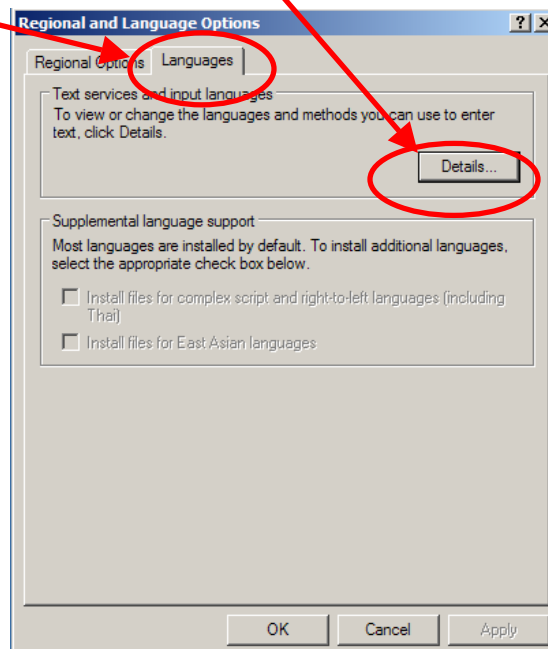
2. Click on *Switch to Classical View*



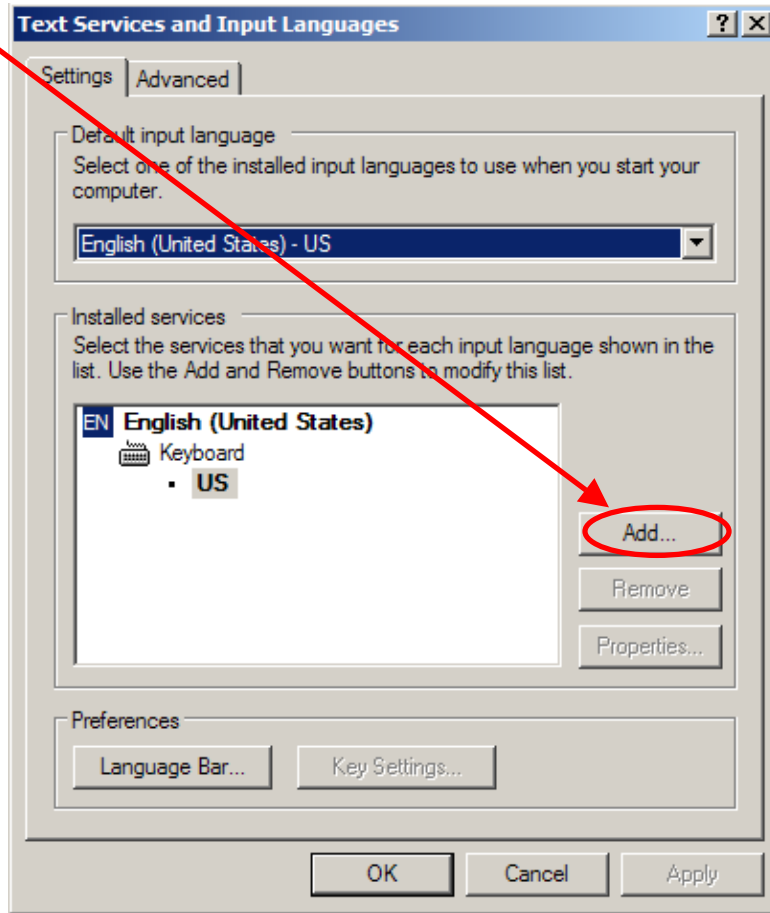
3. Click on the *Regional and Language Option*



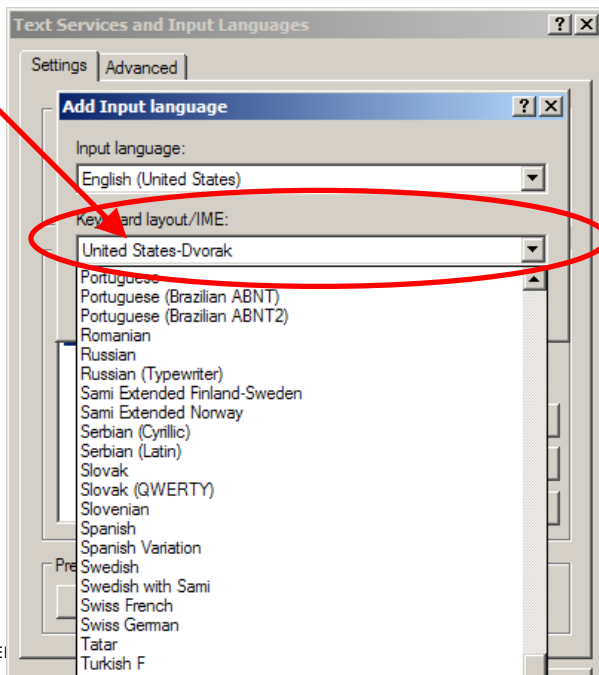
4. Click on the *Language* tab and then click on *Details*



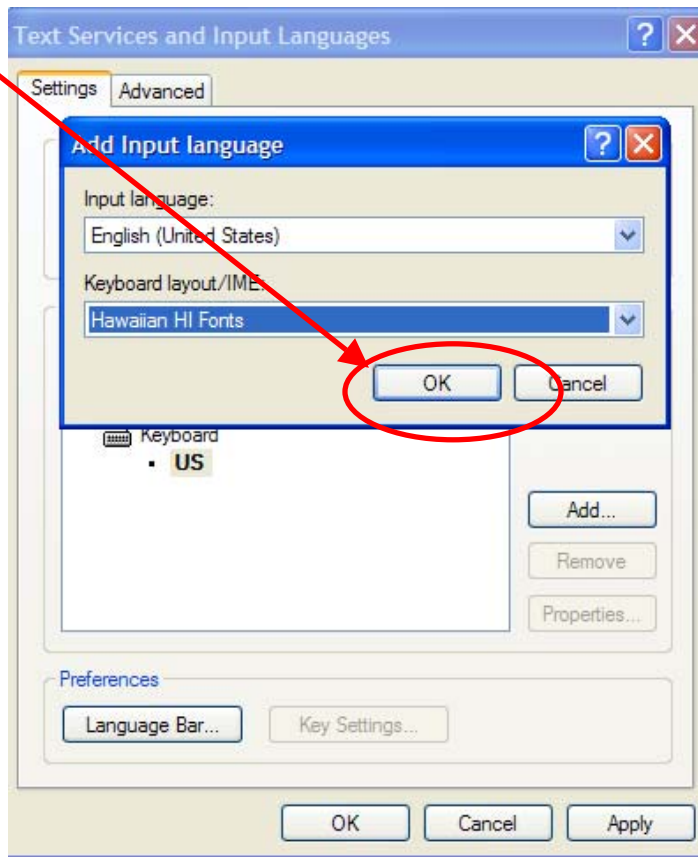
5. Click on *Add*



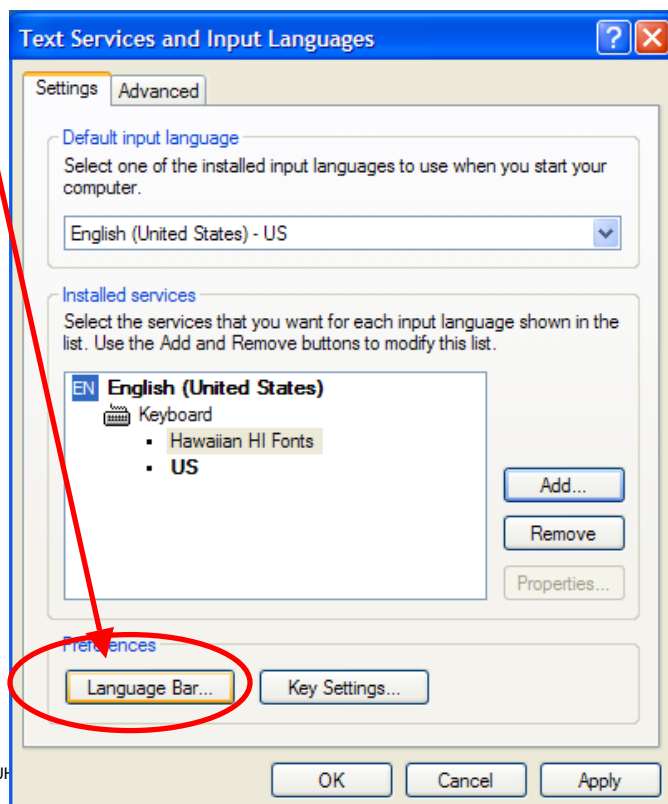
6. Under *Keyboard Layout/IME* scroll until you find *Hawaiian HI Fonts* or *Hawaiian Unicode*



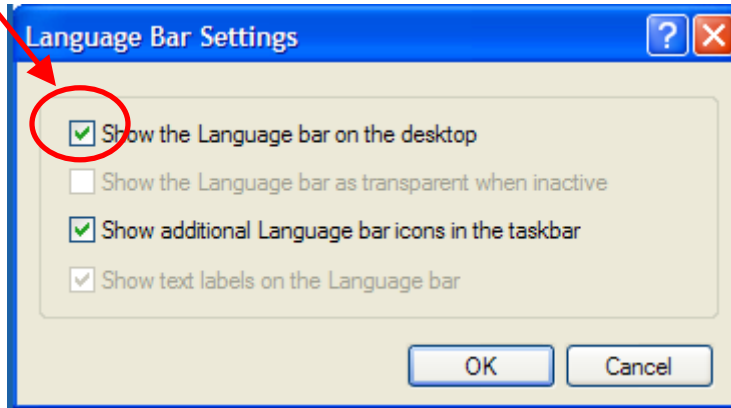
7. Click *OK*



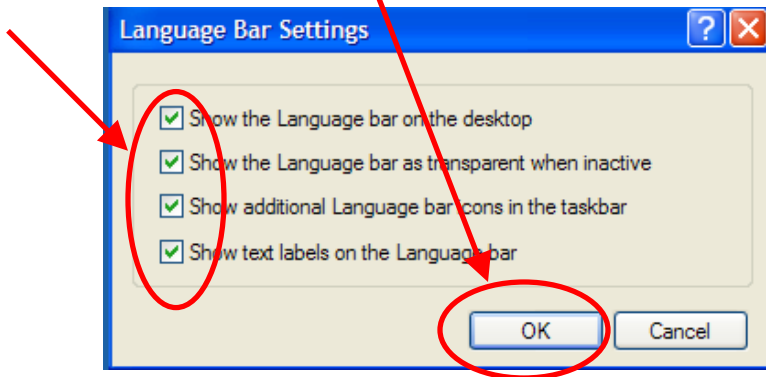
8. Click on the *Language Bar*.



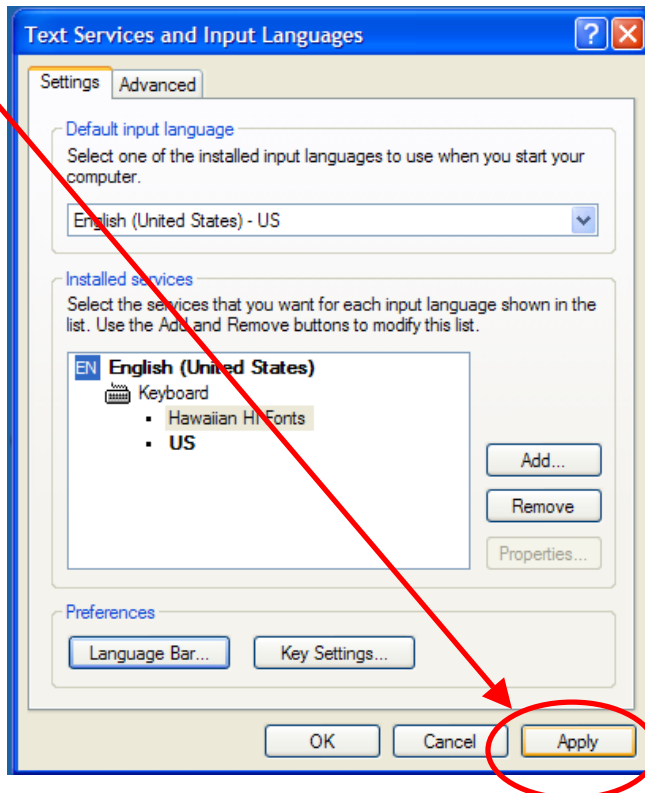
9. Click on the first box, then click on it again.



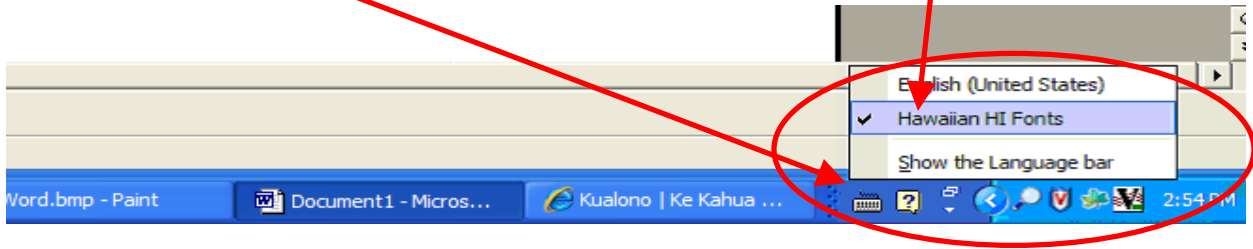
10. Check mark all the boxes. Then click *OK*.



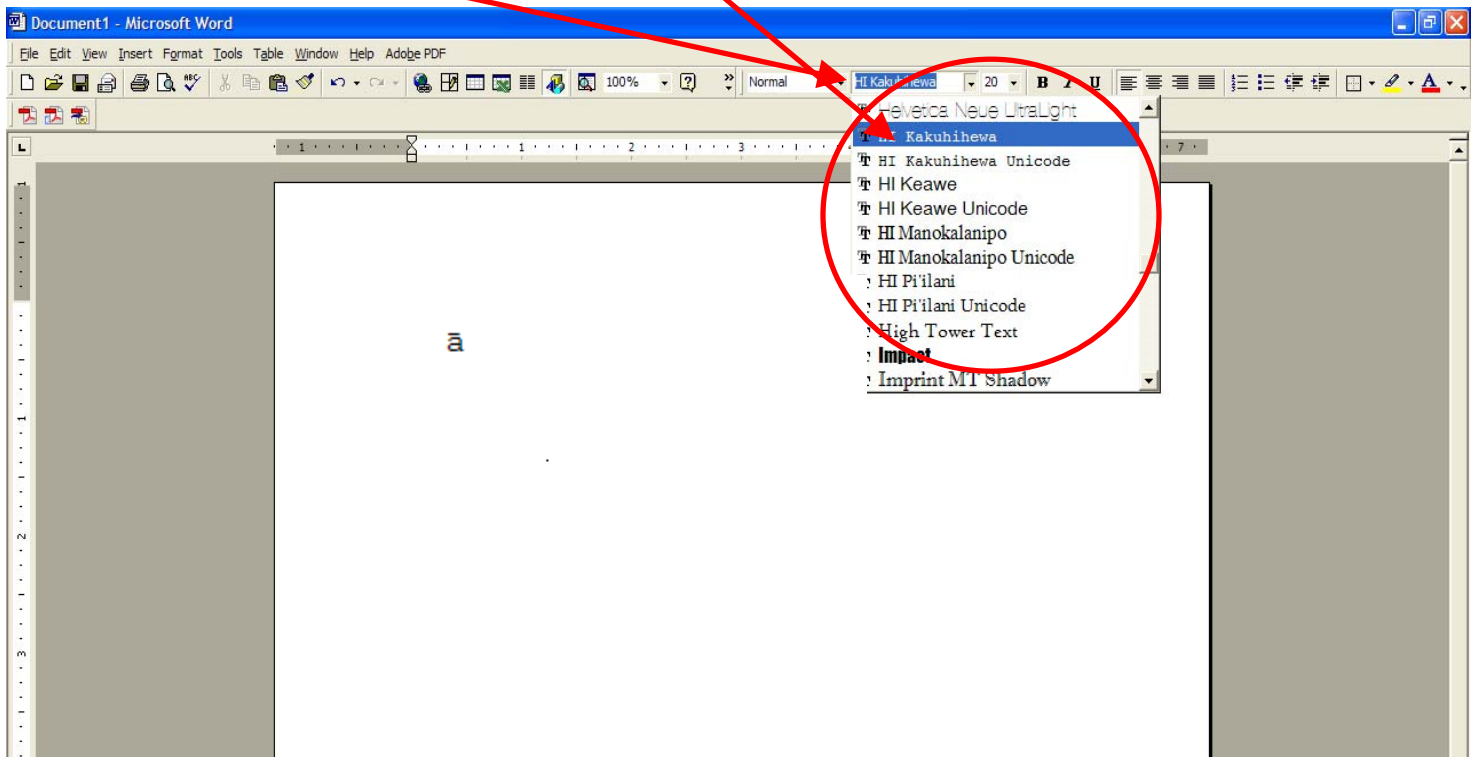
11. Click on *Apply*



12. To be able to use Hawaiian Fonts in Microsoft Word or any other application, open the application first, then go to the keyboard in the *Taskbar*, click on it and change it to *Hawaiian HI Fonts*. (\*Remainder: The application must be opened first. If you exit the application and open it again, you must again change the keyboard.)



13. Finally, go to the *Font* in Word and pick a Hawaiian Font.



- a) To get a kahakō, hold *Right-Alt* and a vowel.
- b) To get an ‘okina, just type the *Apostrophe*.
- c) To get a regular apostrophe, hold *Right-Alt* and *Apostrophe*.