

How to use HP iPAQ H5550 Pocket PC

Note: The iPAQ is a shared resource. Please do not use it to store personal information. The iPAQ should be in the cradle charging when not in use. Do not let the battery die; all the information on the iPAQ will be lost!!!!!!!
If this happens read the information at the end of the document.

1. Press the power button to turn on the iPAQ.



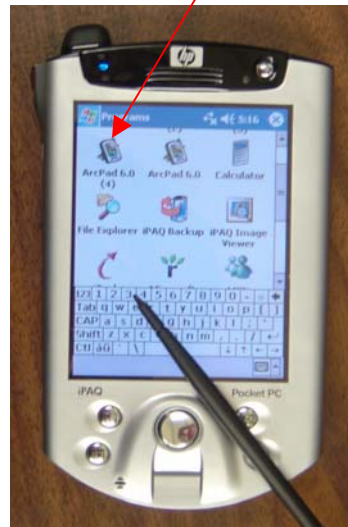
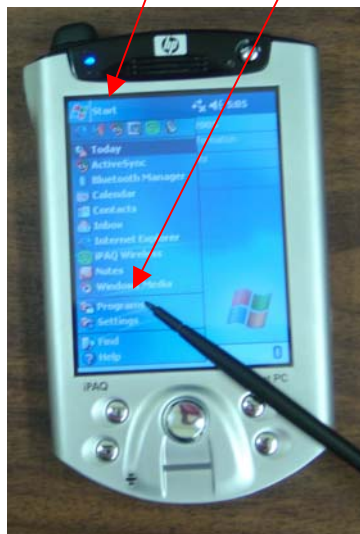
2. Then press down to release the stylus (pen) and then to remove it.



3. To release the iPAQ from its cradle press the release button on the back then lift up.



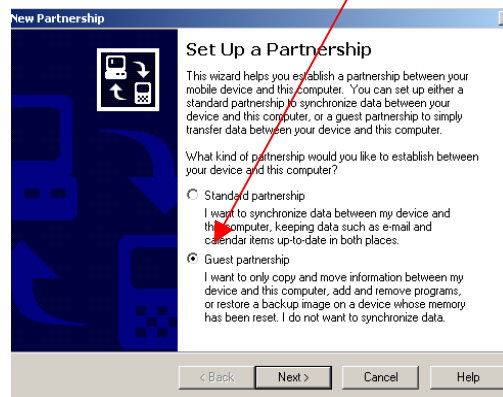
4. To select a program go to “Start”, then “Programs”, then select the program, such as ArcPad 6.0 that you plan on using.



- To download/upload information from/to the iPAQ and a PC set the iPAQ in the cradle and attach the iPAQ's USB cable or serial port cable to the back of the computer.

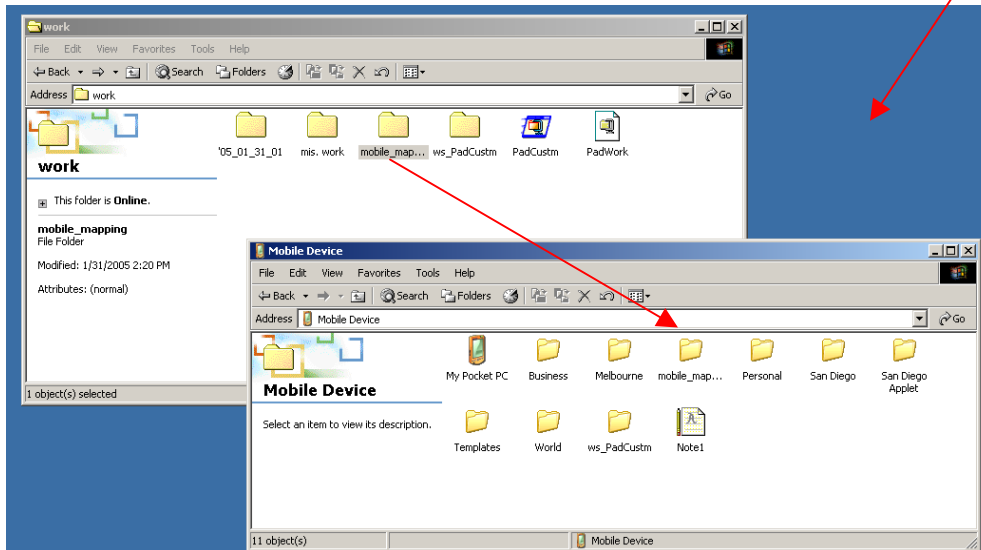


- Then activate the ActiveSync; it should come up on the computer when the iPAQ is plugged into the computer. On the SDAL computers set sync as “Guest partnership”.



Note: ActiveSync is a program loaded on the school computer. If you would like to form a partnership from a computer to the iPAQ use one of the computers in the GIS Lab. If ActiveSync does not start up automatically, double click on “My Computer” icon, then “Mobile Devices”, and that should start up the ActiveSync.

7. To copy data from a computer to the iPAQ double click on the “My Computer” icon then navigate through the “My Computer” window to the information that you wish copy to the iPAQ. Minimize the window. Then double click on the “My Computer” icon again and then clicking on the “Mobile Devices” icon. Next maximize the first screen and resize both screens so they can be seen together. Then drag or copy the information from the computer to the mobile device window.



8. Enjoy and have fun using iPAQ

Instructions for an uncharged iPAQ

If the iPAQ was left uncharged put it on the cradle and let it charge for 24 hours. Then try to restart the iPAQ. If it does not start back up perform a hard boot. Take the stylus and insert it in the small hole on the bottom of the iPAQ. After the iPAQ reboots the ArcPad software and any other non-factory issued software will need to be reinstalled. Please return the iPAQ to the SDAL staff for the installation of the ArcPad software.