

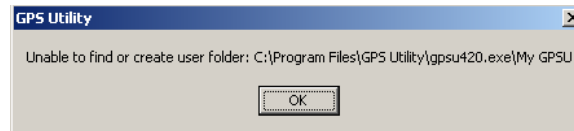
How to Use the GPS Utility

The GPS Utility program is used for managing, manipulating and mapping GPS information.

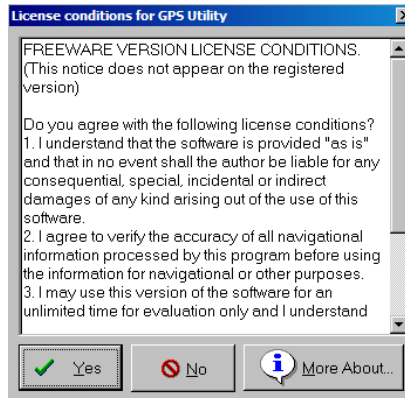
Launch the program by clicking twice on the desktop icon.



A warning will appear stating the program was not able to create your own folder. Just click ok and continue.



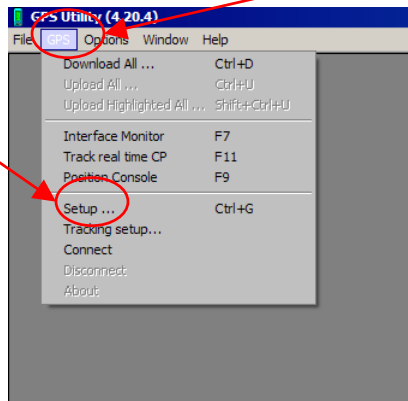
A license conditions for GPS Utility will pop-up on your screen. Click “Yes” in order to continue.



Before configuring the program you should plug-in your device into the PC. Plug in the cable in the one of the USB Ports if you use “USB” cable or in the “Serial” port if you use that type of cable.



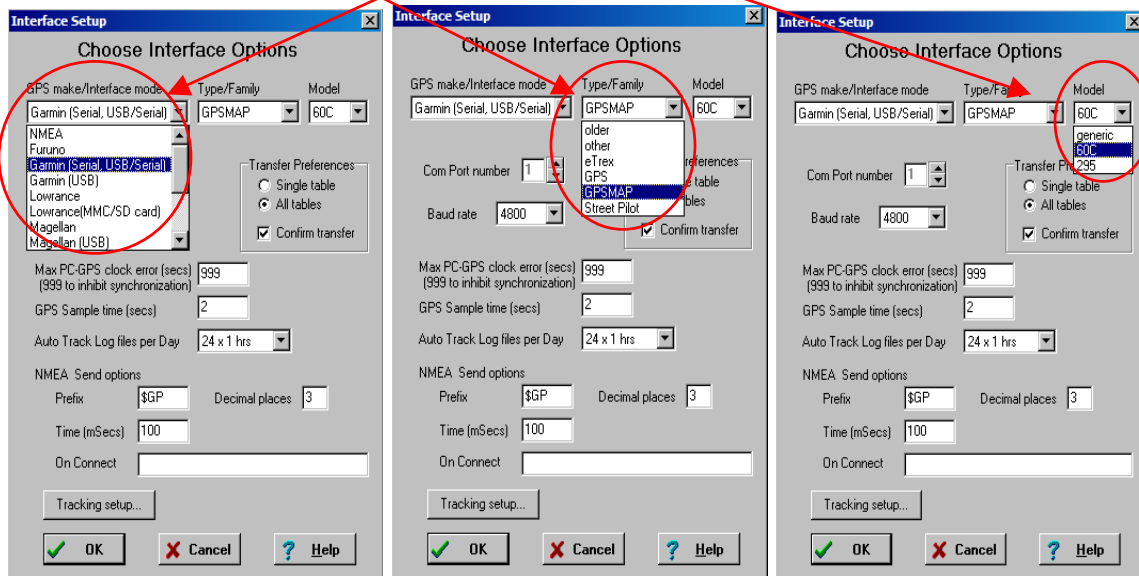
Next step is to configure the program. In order to do that click on “GPS” and then choose “Setup ...”.



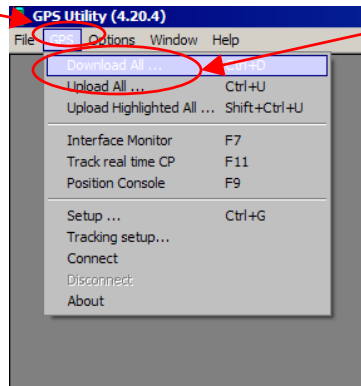
Next, you need to select the properties of your GPS device. In our example we use Garmin with:

- Serial cable instead of USB
- Type/Family – GPSMAP
- Model – 60C

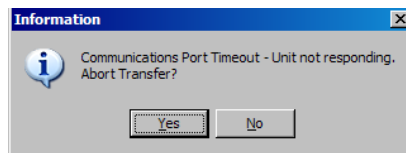
If your device is different find its name from the “GPS make/Interface mode” menu, select its “Type/Family” and “Model”. If it is the same, select the same properties as ours. Leave the other Options by default and click “OK”.



After configuring the program you are ready to retrieve your information. Click on “GPS” in the upper left corner of your screen and then click on “Download All”

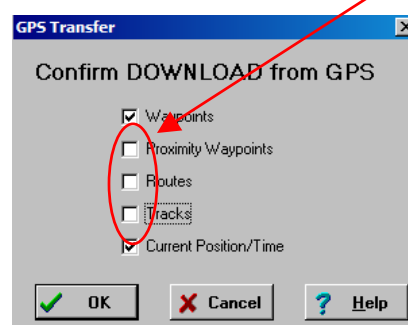


If you see this message:

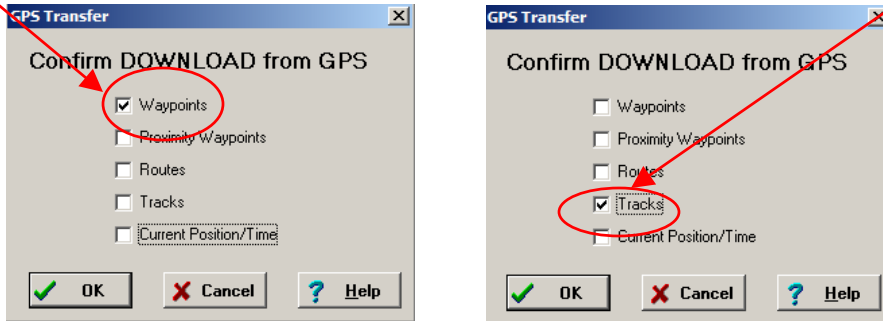


Click “Yes”. Check if your cable is properly connected and try to download your information again.

Now you can choose which information from your GPS that you want to retrieve. If you want to retrieve all of the information just click “OK”. If not - remove the marks in front of the information that you do not want to download.

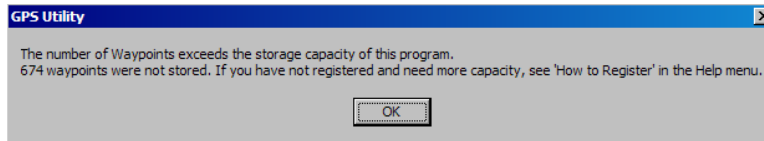


For example if you want to retrieve just your points – leave the mark only on “Waypoints”. If you want to retrieve just your lines – leave the mark only on “Tracks”.



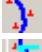







After clicking “OK” you should wait a little bit while the program is downloading the information from your GPS device.

If such kind of message comes up on your screen – it means that the program storage capacity can take up to 100 waypoints and the waypoints after number 100 on your device will not be retrieved. In order to retrieve the rest of your waypoints you should delete the first 100 waypoints from your GPS device that you already have retrieved and do the procedure again.

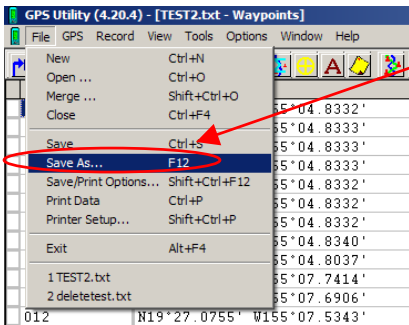


After downloading your information into the program. You can see your:

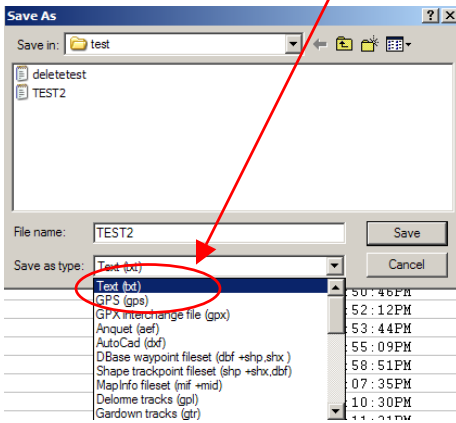
-  - Waypoints
-  - Routes
-  - Trackpoints table
-  - Track summary table
-  - Current point
-  - Annotation table
-  - Description
-  - Map

ID	Coordinate	Symbol
001	N19°42.2229' W155°04.8332'	Beach
002	N19°42.2229' W155°04.8333'	Beach
003	N19°42.2229' W155°04.8333'	Beach
004	N19°42.2229' W155°04.8333'	Beach
005	N19°42.2229' W155°04.8332'	Beach
006	N19°42.2229' W155°04.8332'	Beach
007	N19°42.2229' W155°04.8332'	Beach

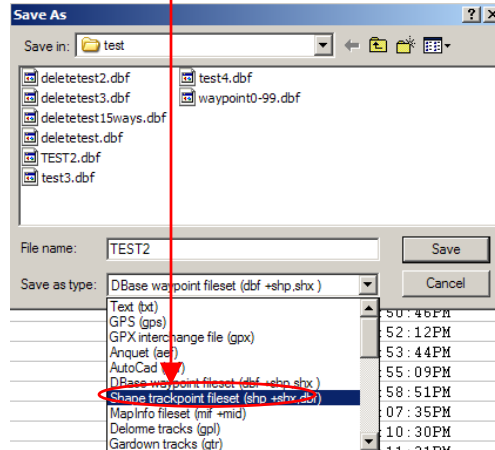
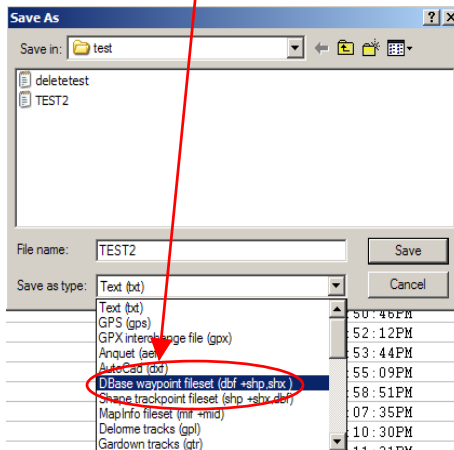
If you want to save your information go to “File” and select “Save As ...” and navigate to the folder that will contain your saved data.



If you choose to save it as *.txt file you will be able to retrieve it with GPS Utility program.



However, if you want to use your information in program which will allow you to see your waypoints and tracks more clearly (like ArcGIS 9) you will have to save your information as “Dbase waypoint fileset” (if you want to display your waypoints in ArcGIS 9). And then save it one more time as “Shape trackpoint fileset” (if you want to display your tracks in ArcGIS 9).



Now you can view your data by opening the file in ArcMap. **Please note:** GPS Utility does not create a projection file (*.prj). You will need to define the projection in ArcCatalog or ArcMap to have a projection associated with your shapefile.