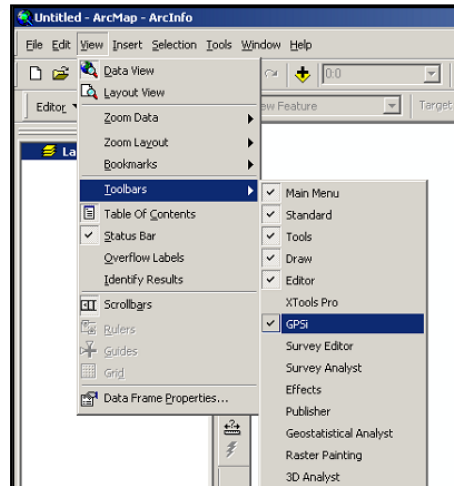


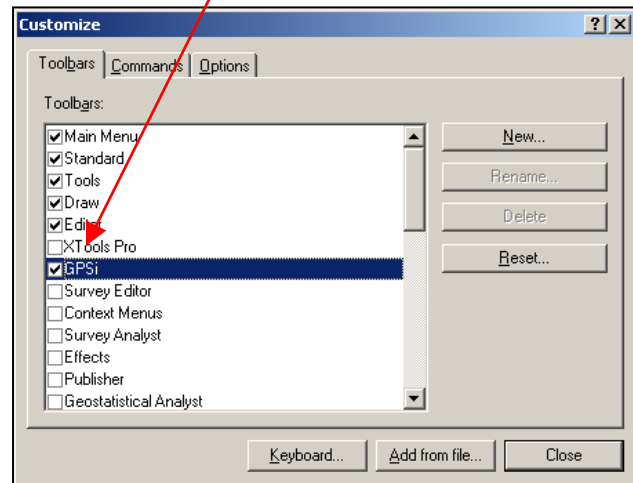
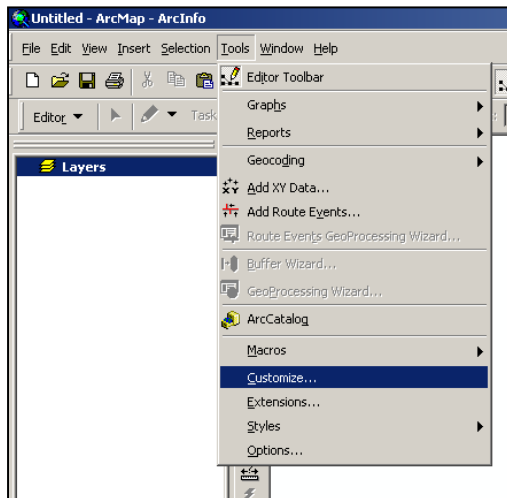
How to Use the GPSi extension in ArcMap to Download Points or Tracks From/To a Garmin GPS unit

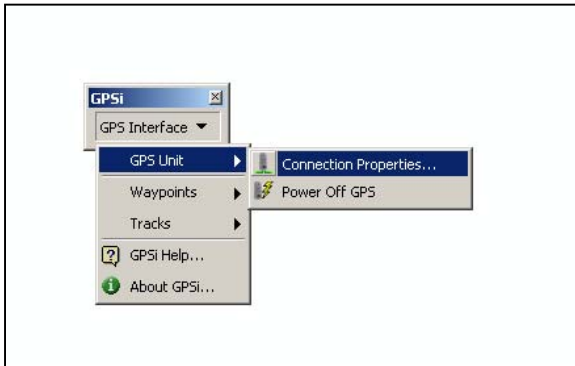
Connect the Garmin™ handheld GPS unit to the computer by using either a serial or USB cable (depending on the particular unit). Also, *make sure that the interface settings of the GPS unit are set to “GARMIN”*. If this setting is not correct, ArcMap will not recognize the GPS unit.

Enable the GPSi toolbar by going to View => Toolbars, and selecting GPSi from the list.

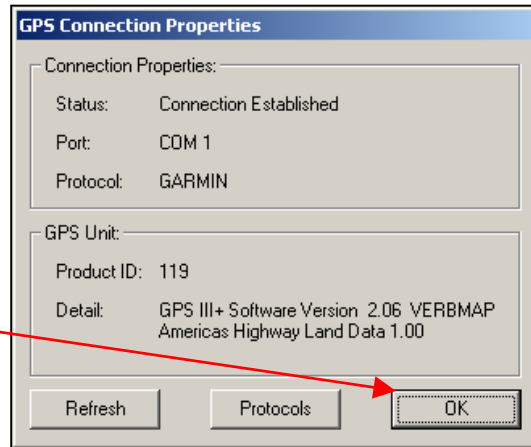


Alternately, you can go to **Tools => Customize**, and check the box next to GPSi inside of the Customize window. You can then close the Customize window.



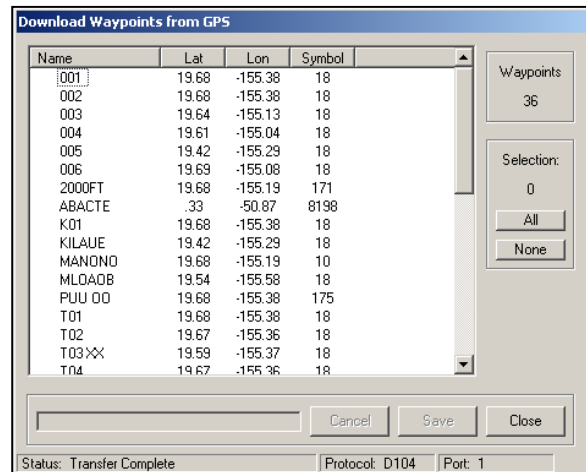
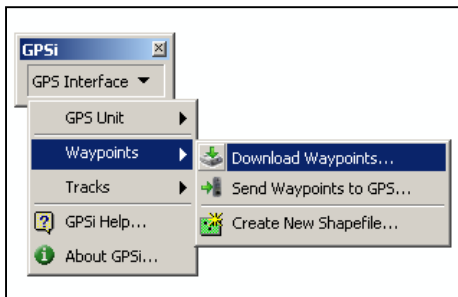


Click on **GPS Interface**, then navigate to **Connection Properties** to connect to the GPS unit. ****The GPS unit must be turned on in order to connect to it. ****



Click **OK**.

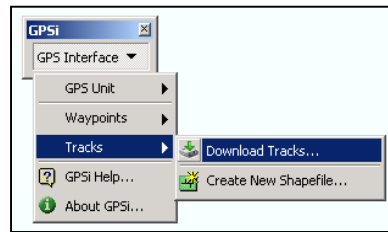
Next, navigate to **Download Waypoints** to begin downloading the points off the GPS unit. The GPS may have automatically turned off since the last step, so make sure that it is turned on before you begin downloading points.



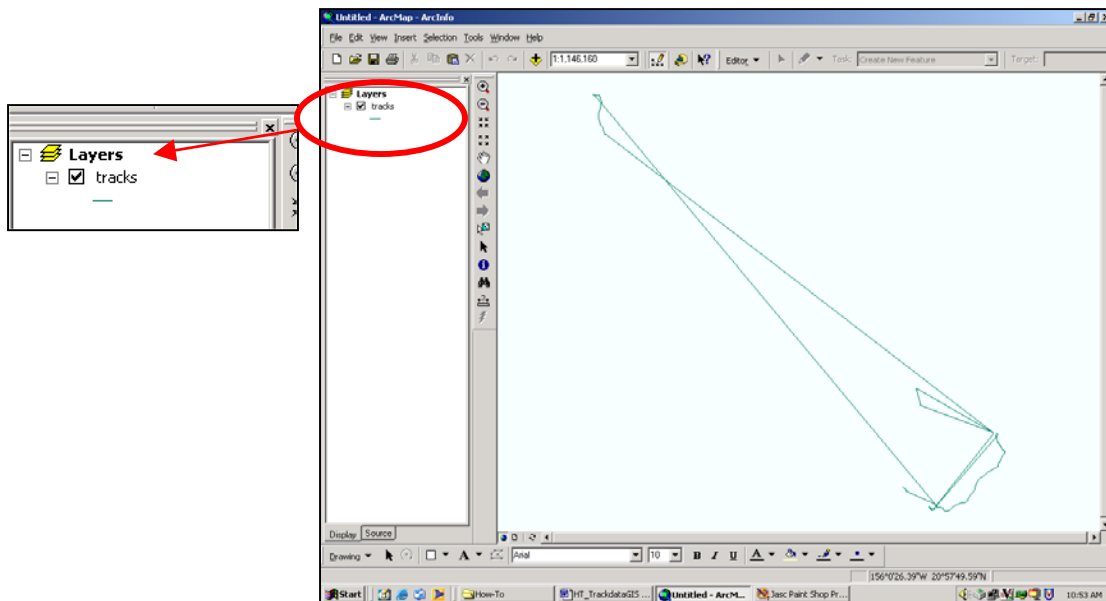
Click the GPS waypoints that you want to save into an ArcGIS shapefile, or click **All** to select all of the downloaded points. **Click on save** after you have selected the points you want, and your file will be added to ArcMap

To Download Track Information From the GPS unit

- 1.) Click on GPS Interface, and Navigate to Tracks => Download Tracks.



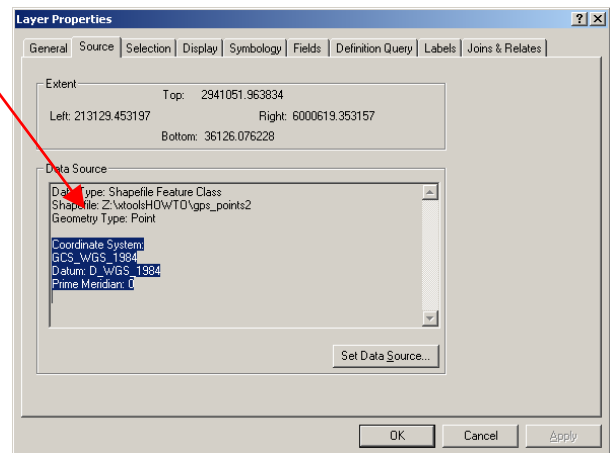
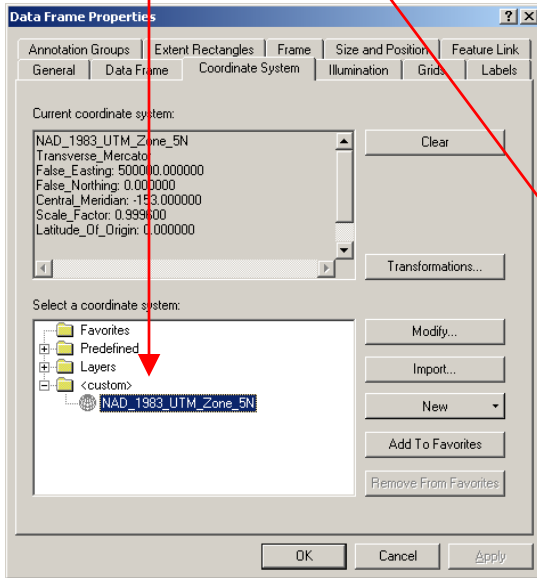
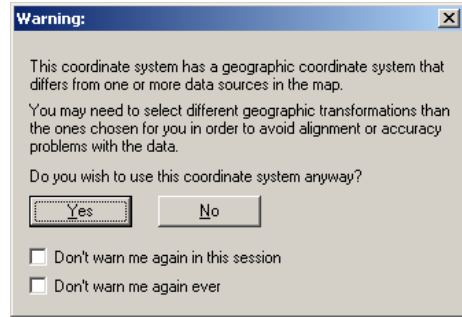
- 2.) Name your shapefile, and select a folder to put it in. Click save to write the new shapefile. Your .shp file will be automatically added to ArcMap.



WARNING!

When the points are downloaded from the GPS unit, the new shapefile may have a different coordinate system than what is being used for the ArcMap dataframe. If you want to change the new shapefile's coordinate system, use the projection wizard in ArcToolbox (see "How to Re-Project a Shapefiles using the Projection Wizard in ArcToolbox" ht_proj_Wizard).

The new shapefile has a different coordinate system than the dataframe, and they need to match to avoid alignment and accuracy problems.



Right clicking either the dataframe or the shapefile, and choosing Properties can bring up these menus.