

How to Use the DNRgarmin

DNRgarmin is GPS extension that works with ArcView, ArcMap (8.x, 9.x), Landview or ArcExplorer. With the help of this extension you will be able to transfer your Garmin GPS waypoints, tracks or routes directly to one of the above programs and save your data as Graphics or Shapefiles. In our example we will show how DNRgarmin should cooperate with ArcMap.

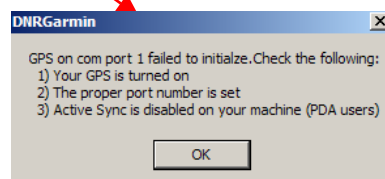
Before launching the program you should plug-in your device into the PC. Plug in the cable in the one of the USB Ports if you use “USB” cable or in the “Serial” port if you use that type of cable. (If you use Windows XP the “USB” cable might not work properly. Our advice is to use the “Serial” port if you are working on XP.)



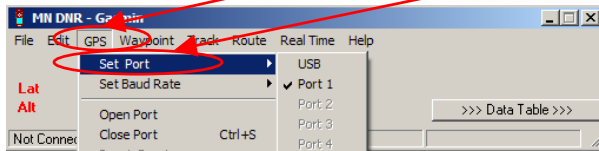
Launch the program by clicking twice on the desktop icon.



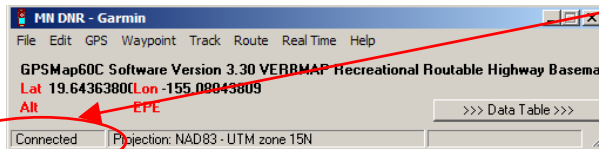
The program will show a splash screen and after that it will try to connect to your GPS device. If you see this message, check if your device is properly connected to the PC and follow the instructions in the message.



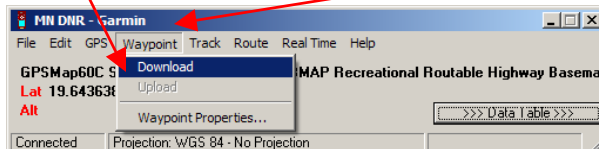
Configure your program by clicking on “GPS” → “Set Port” → “USB” (if you are using USB cable) or “Port 1” (if you are using Serial).



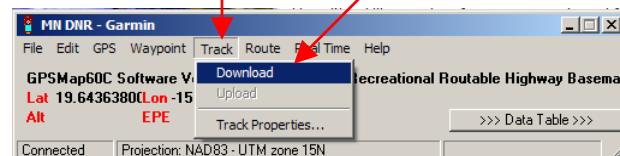
If your GPS is properly connected to the program you should see “Connected” in the bottom left corner of the program window.



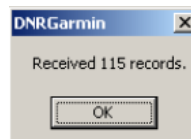
Now the program is ready to retrieve your data. Click on “Waypoint” and then “Download” to download your waypoints into the program.



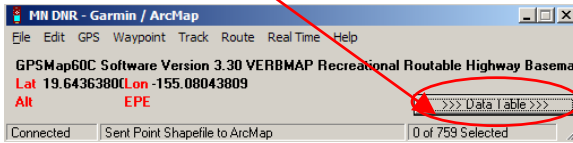
Or click on “Track” -> “Download” if you want to retrieve your Tracks.



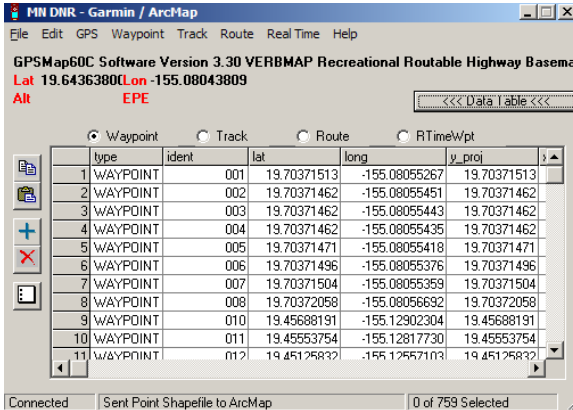
After the data is downloaded you will receive a message stating the number of records received. In our GPS there were 115 records as shown below:



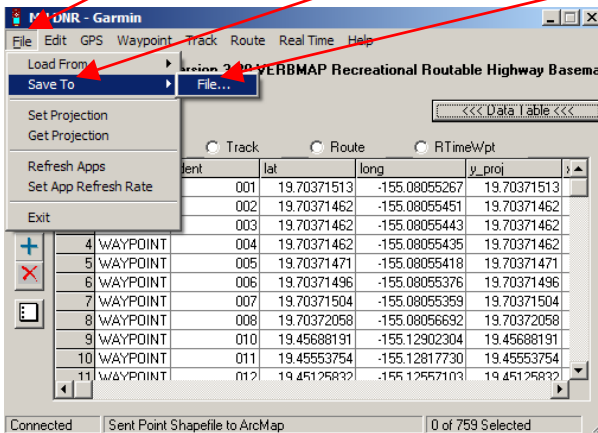
Click on “>>> Data Table >>>” to see the properties of each one of the downloaded data.



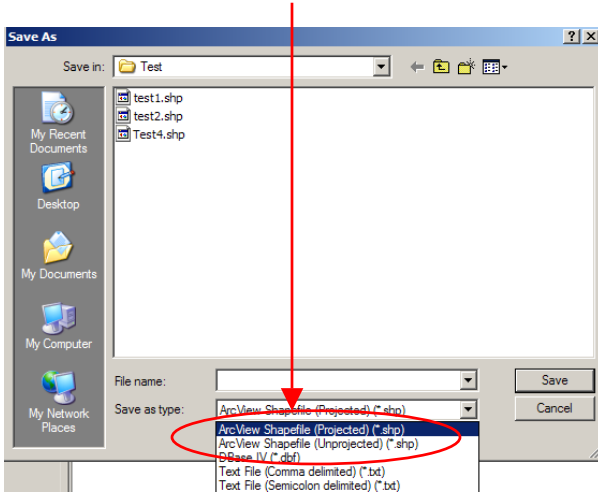
Now you are able to edit your data if you wish.



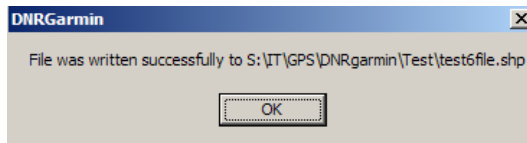
After you are finished with editing your data you should save your data in order to see it in ArcMap. There are two ways of doing that. The first is to save it as ArcView Shapefile. Click on “File”, after that on “Save to” and then “File...”



Save it as a “ArcView Shapefile (Projected) (*.shp)”.

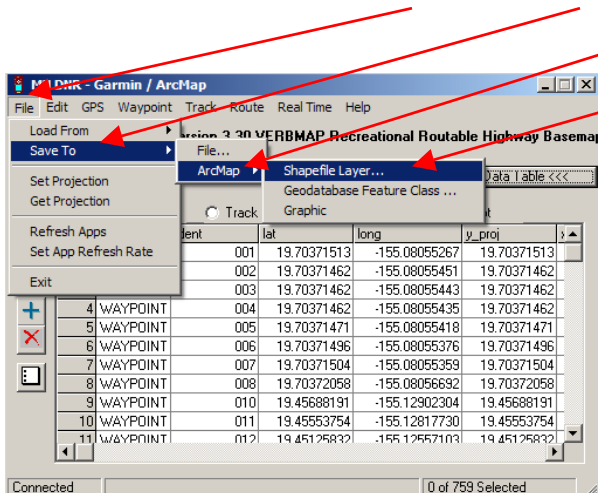


After successfully completing the save process you will receive this message:

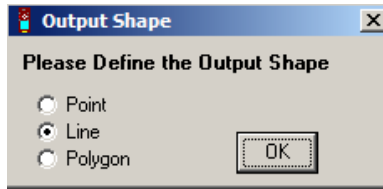


Now you can retrieve your data by opening the file from ArcMap. **Please note:** DNRgarmin does not create a projection file (*.prj). You will need to define the projection in ArcCatalog or ArcMap to have a projection associated with your shapefile.

There is another way of saving your data – a little bit faster and you will see your data in ArcMap immediately. First, you need to launch the program ArcMap. After that go back to DNR Garmin and click on “File” -> “Save To” -> “ArcMap” -> “Shapefile Layer...”.



In our example we are downloading waypoints. However, if you are saving your tracks you will see the window below and should choose “Line”.



If your data is successfully converted into Point Shapefile you should see the message saying “Sent Point Shapefile to ArcMap” on the bottom of your DNR Garmin program. After that you will be able to see the results immediately in your ArcMap program.

