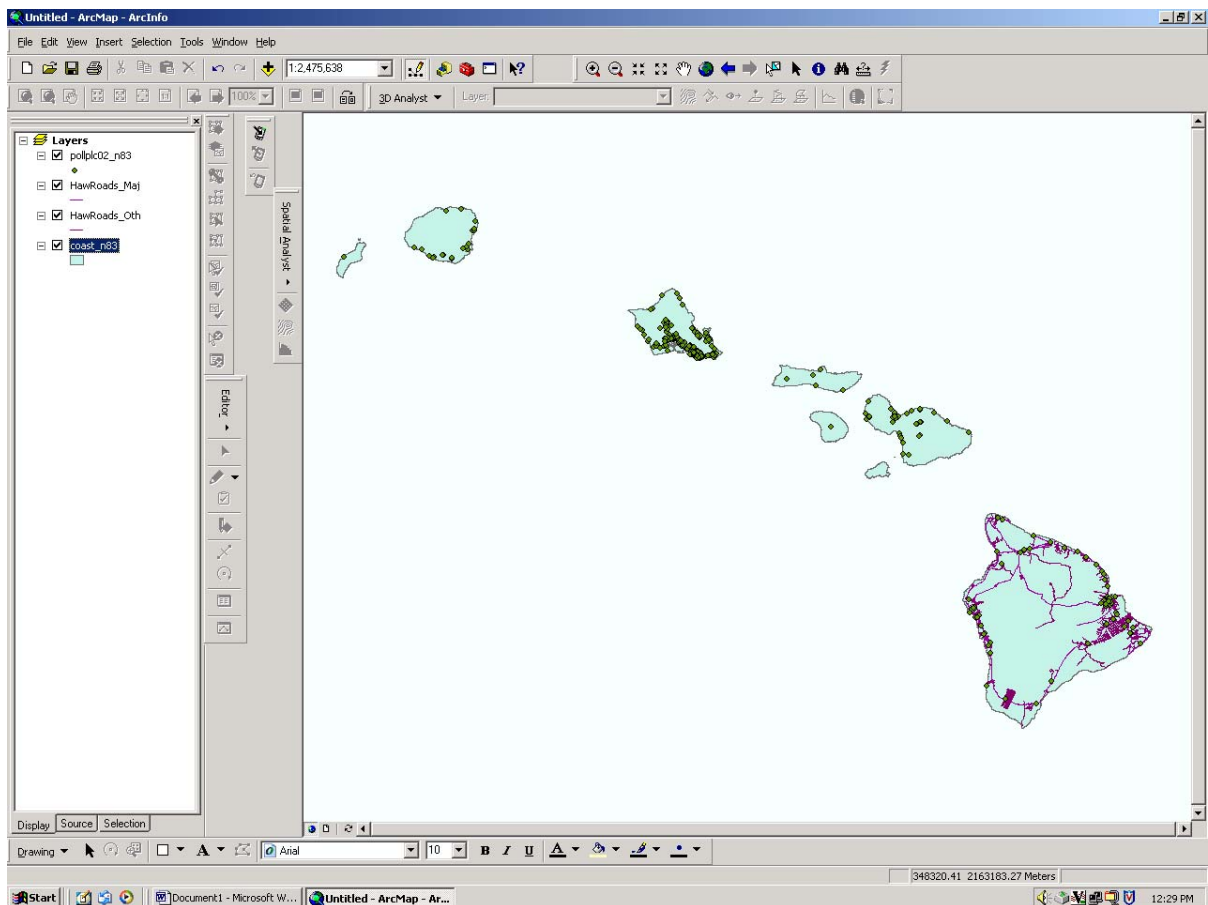
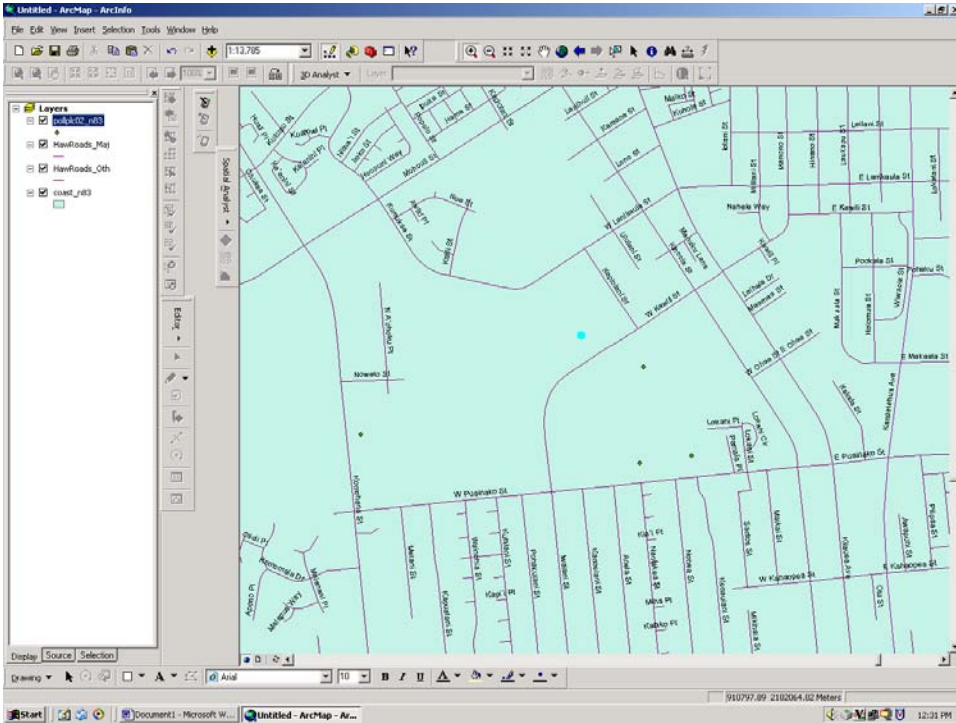


How to Convert an ArcGIS Map in to an ArcPad map

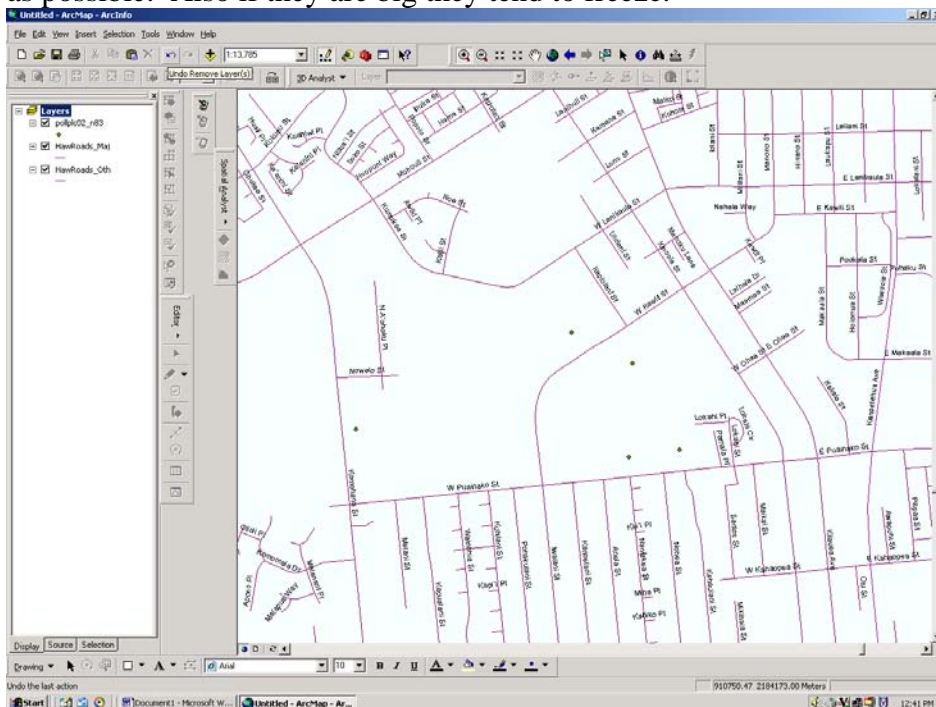
1. Create or download a map in to ArcMap.



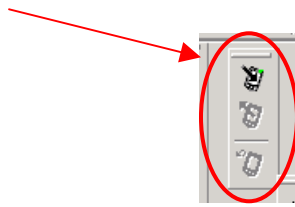
2. Next zoom into the area that you are intending to use.
Note: Zooming now will make it easier when you get to the field. The handhelds can take a while to zoom in or freeze.



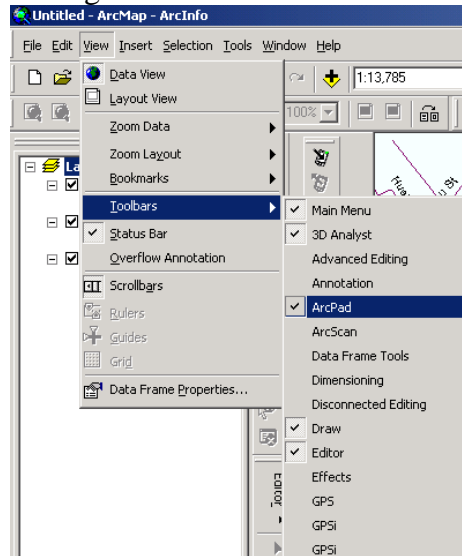
3. If there are any layers that are not necessary for the outing remove them from the map.
Note: The handhelds have a limited amount of space so try to make them as small as possible. Also if they are big they tend to freeze.



4. Next add the Arc pad toolbar if not already added.



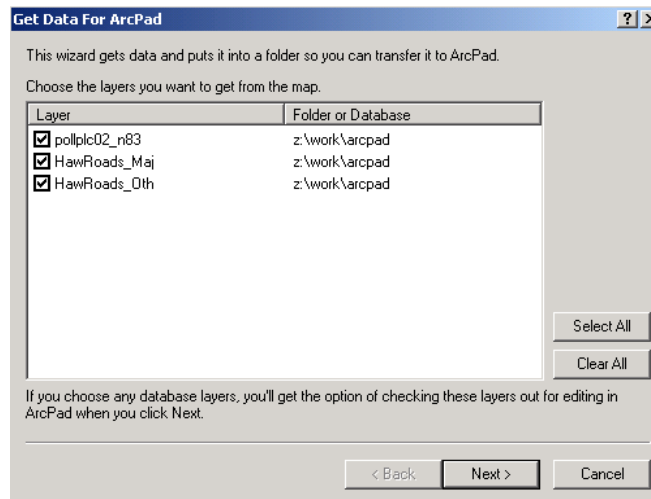
5. To add the ArcPad toolbar go to View then Toolbars then click on ArcPad



6. Next click “Get Data For ArcPad” on the ArcPad toolbar.
Note if you have any selected features go “to selection” then “clear selected features”

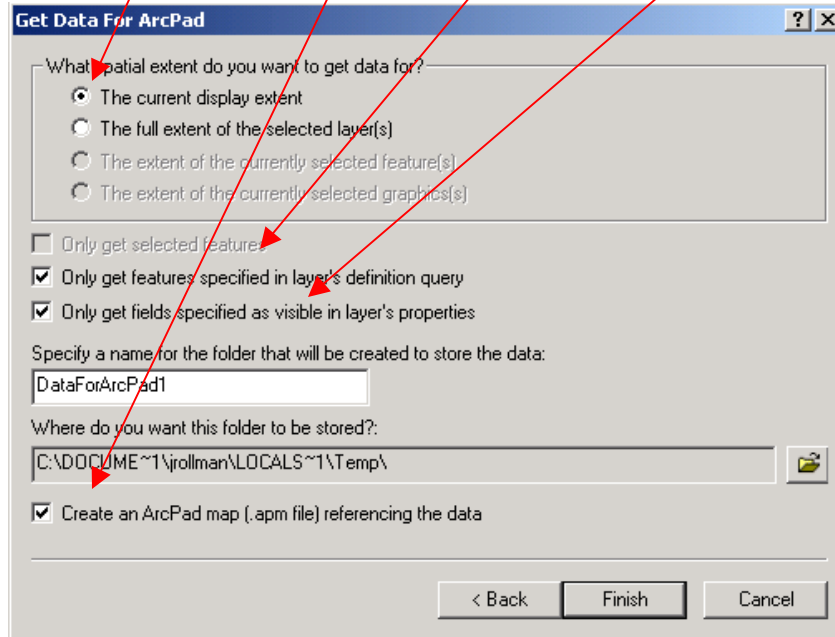


7. Select the layers that you would like to convert to ArcPad.
Then click “Next”.

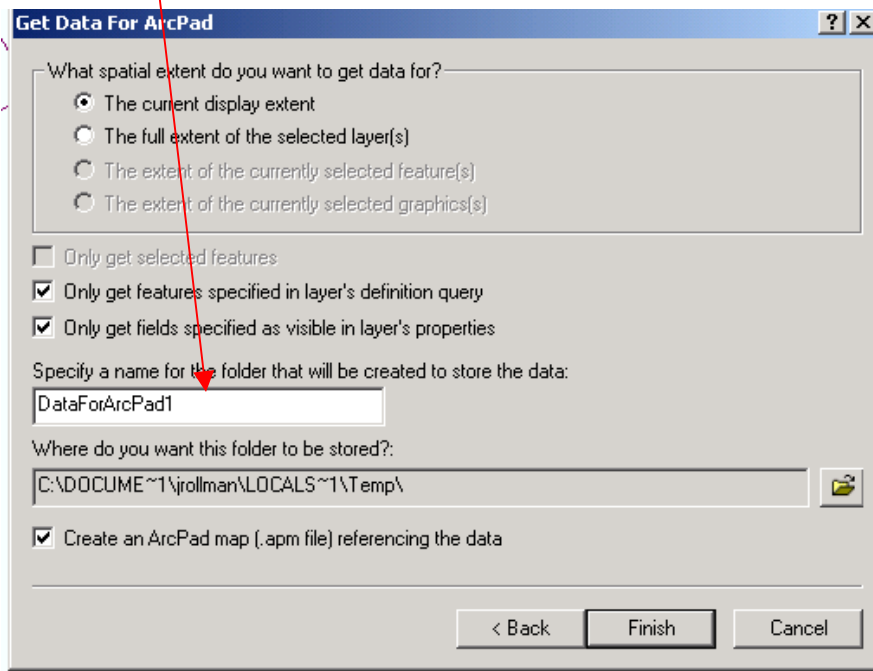


8. Make sure that “The current display extent,” “Only get features specified in layer’s definition query,” “Only get fields specified as visible in layer’s properties,” and “Create an ArcPad map” is selected.

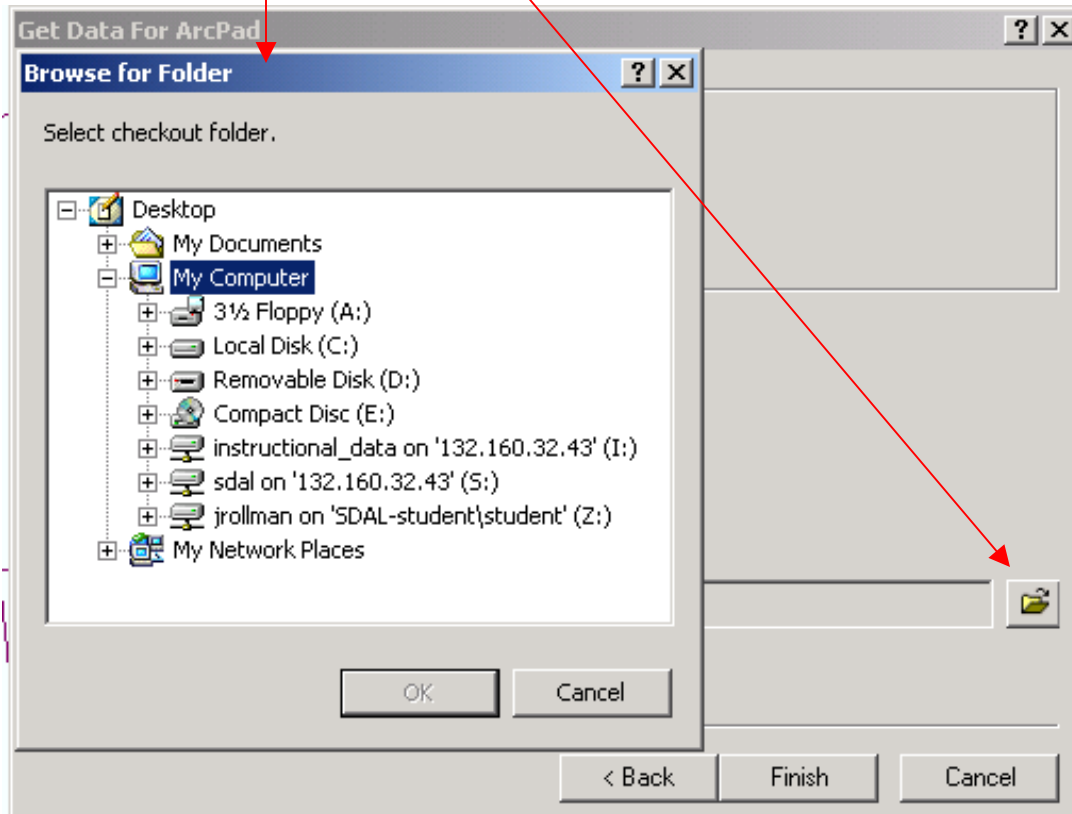
Note: if you did not clear selections earlier cancel and go back to step 6. If you do not your map will only have the selected features on it.



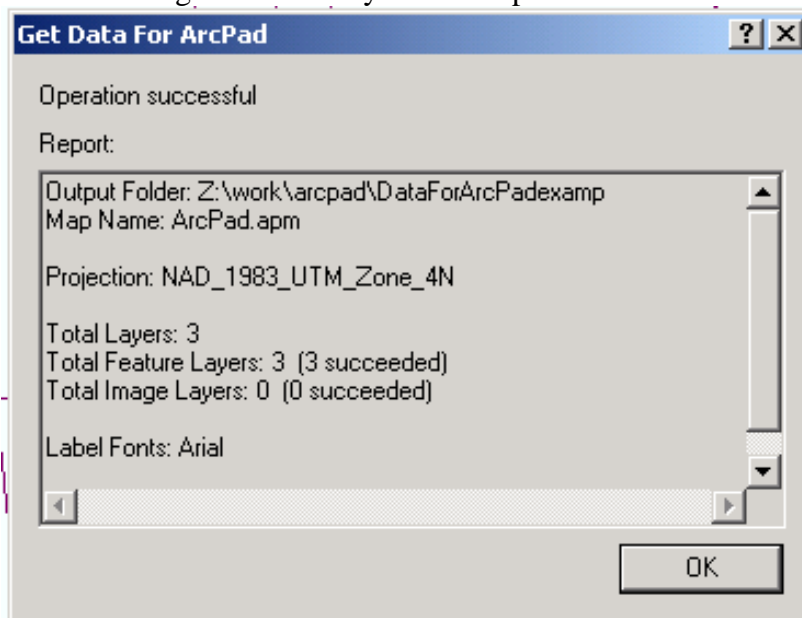
9. Next name the map.



10. Then click the “browse to folder” button and navigate to the location you would like to save the map under. Then click “ok” then “finish”



11. The next screen will give a summary of the Map click “ok.”



12. Download map to iPAQ or GeoXT follow the instructions on “How to use HP iPAQ” or “How to use GeoXT.”