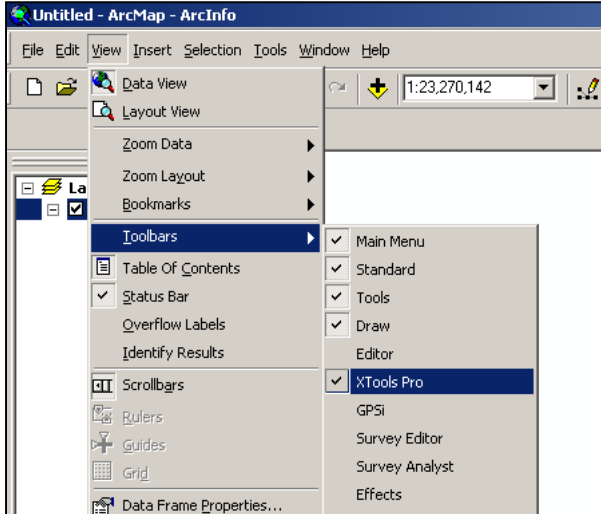
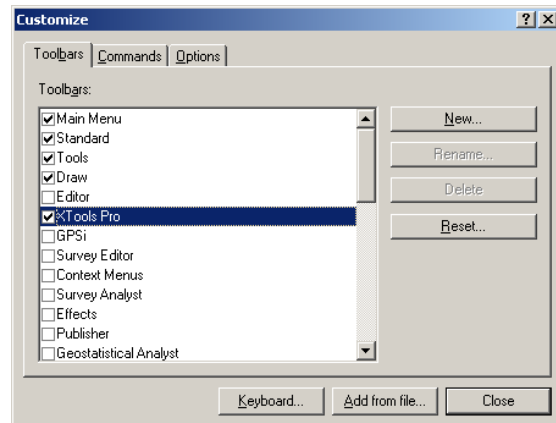


How to Create X Y Coordinates in a Shapefile's Attribute Table Using XtoolsPRO

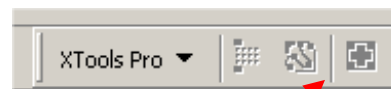
Enable the Xtools toolbar by going to View => Toolbars



Alternatively, you can go to Tools => Customize, and check the box next to Xtools Pro.

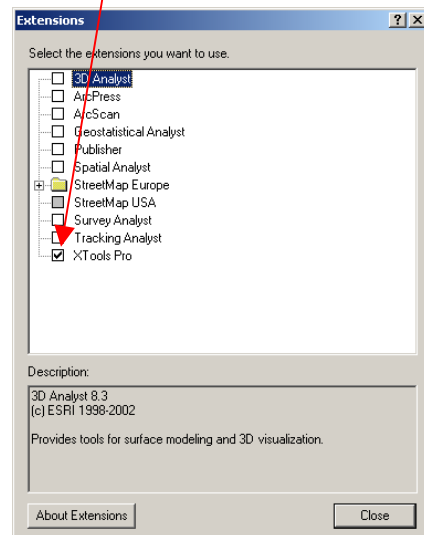
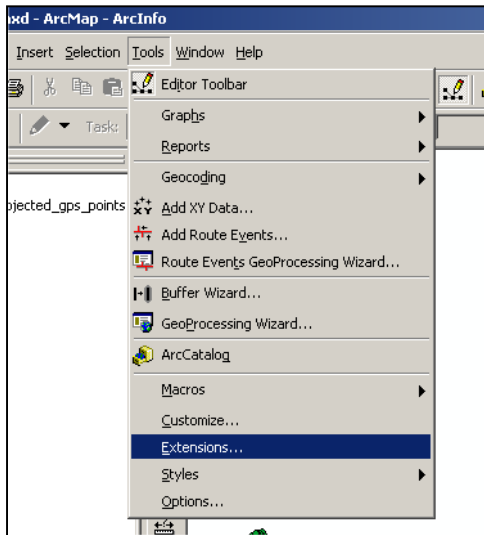


The Xtools toolbar will now be visible either floating or docked somewhere within your ArcMap window.

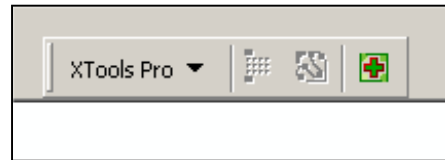


Notice that the options and all functions of Xtools Pro are grayed out and unavailable. **You must enable the extension for it to become usable.**

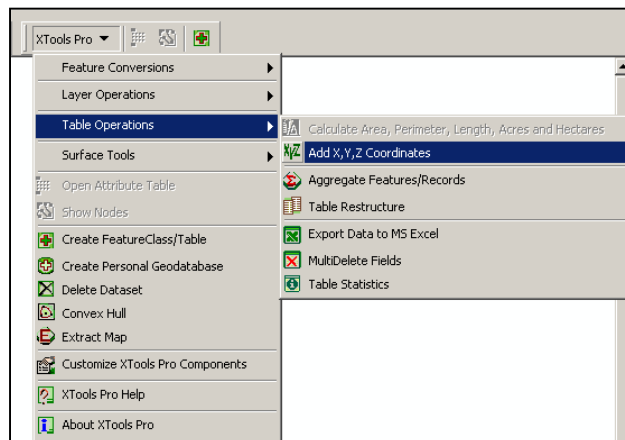
Enable the extension by going to Tools => Extensions, and checking the box next to Xtools in the Extension window.



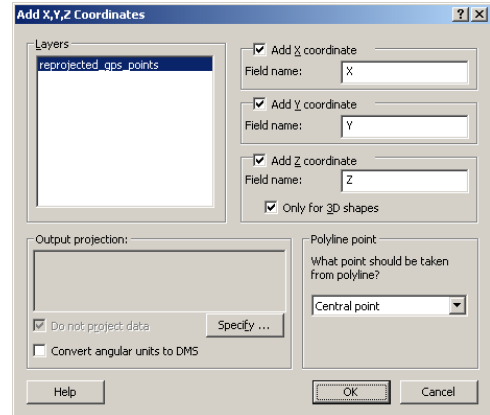
After you have activated the extension, the options and functions of Xtools Pro will be colored in and available to use.



You can now begin to **Add X,Y Coordinates to your shapefile attribute table**. Do this by going to the Xtools Pro menu => Table Operations => Add X,Y, Z Coordinates.



This window will popup giving you a list of available layer tables to add the coordinates to, as well as which coordinates you want to add to the table. Select the layer you want from the list, **Click OK**, and the fields will be added to the shapefile's attribute table.



This is what the shapefile's attribute table looked like before the X,Y coordinates were added.

FID	Shape	Waypoint	Symbol	Colour	Display	Altitude
0	Point	001	18	0	3	0
1	Point	002	18	0	3	0
2	Point	003	18	0	3	0
3	Point	004	18	0	3	0
4	Point	005	18	0	3	0
5	Point	006	18	0	3	0
6	Point	2000FT	171	0	3	0
7	Point	ABACTE	8198	0	1	0
8	Point	K01	18	0	3	0
9	Point	KILAUE	18	0	3	0
10	Point	MANONO	10	0	3	0
11	Point	MLQADB	18	0	3	0
12	Point	PUU OO	175	0	3	0
13	Point	T01	18	0	3	0
14	Point	T02	18	0	3	0

Here is the same shapefile's attribute table after the Coordinates were added. Notice that there are now two new fields added to the table with coordinate information.

FID	Shape	Waypoint	Symbol	Colour	Display	Altitude	X	Y
0	Point	001	18	0	3	0	250029.274277	2177486.93446
1	Point	002	18	0	3	0	250008.060676	2177418.80784
2	Point	003	18	0	3	0	276852.922652	2173041.74549
3	Point	004	18	0	3	0	285584.923027	2169508.14161
4	Point	005	18	0	3	0	259321.511196	2149199.55611
5	Point	006	18	0	3	0	281855.455661	2178646.70836
6	Point	2000FT	171	0	3	0	270739.578282	2177723.53938
7	Point	ABACTE	8198	0	1	0	0	0
8	Point	K01	18	0	3	0	250139.214533	2177460.93441
9	Point	KILAUE	18	0	3	0	259321.511196	2149199.55611
10	Point	MANONO	10	0	3	0	270745.280515	2177729.40645
11	Point	MLQADB	18	0	3	0	229562.813866	2162420.57781
12	Point	PUU OO	175	0	3	0	250035.209024	2177508.73377
13	Point	T01	18	0	3	0	250012.482372	2177453.20493
14	Point	T02	18	0	3	0	252508.471009	2176731.59042