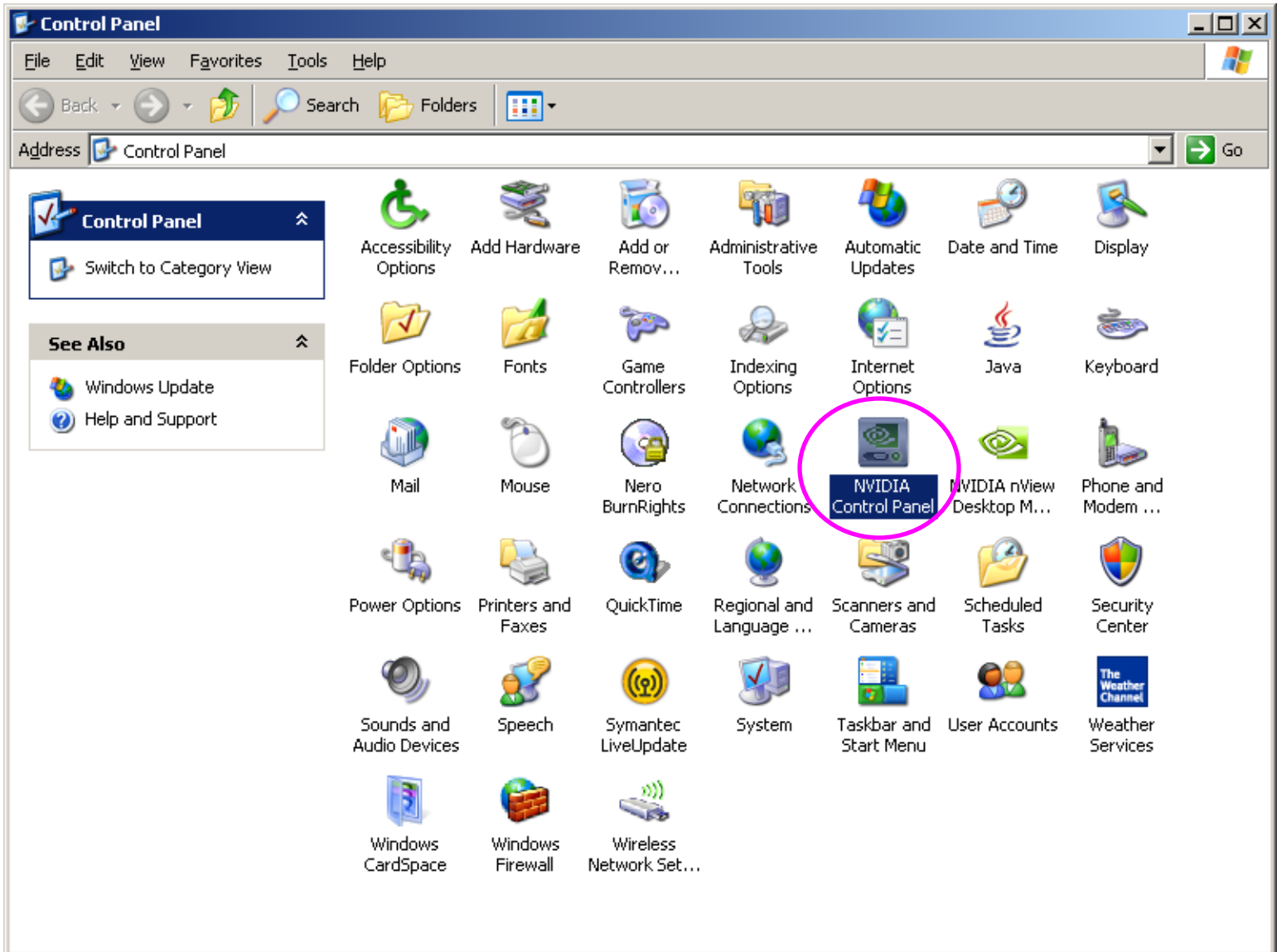
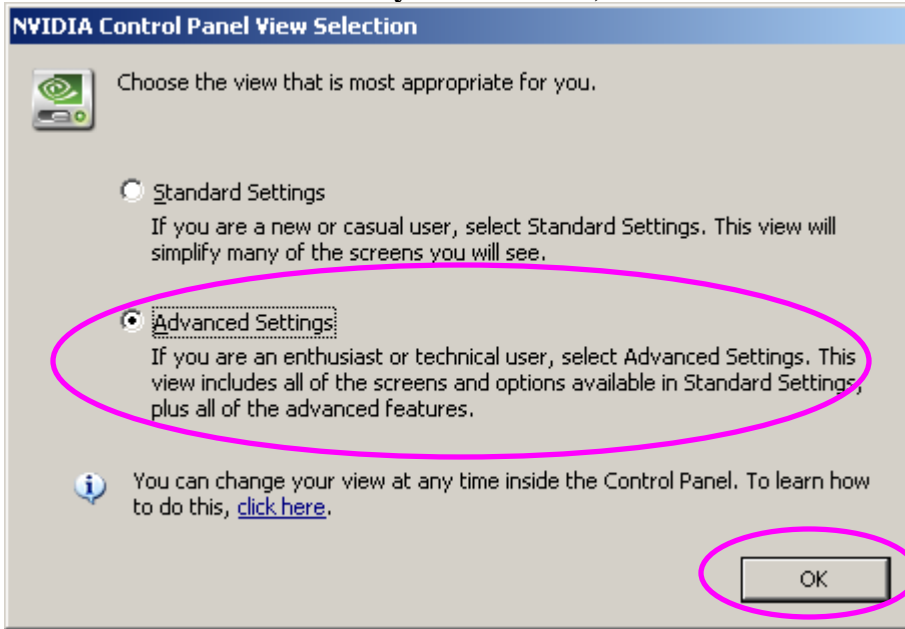


How to Clone the Overhead Projector in K273

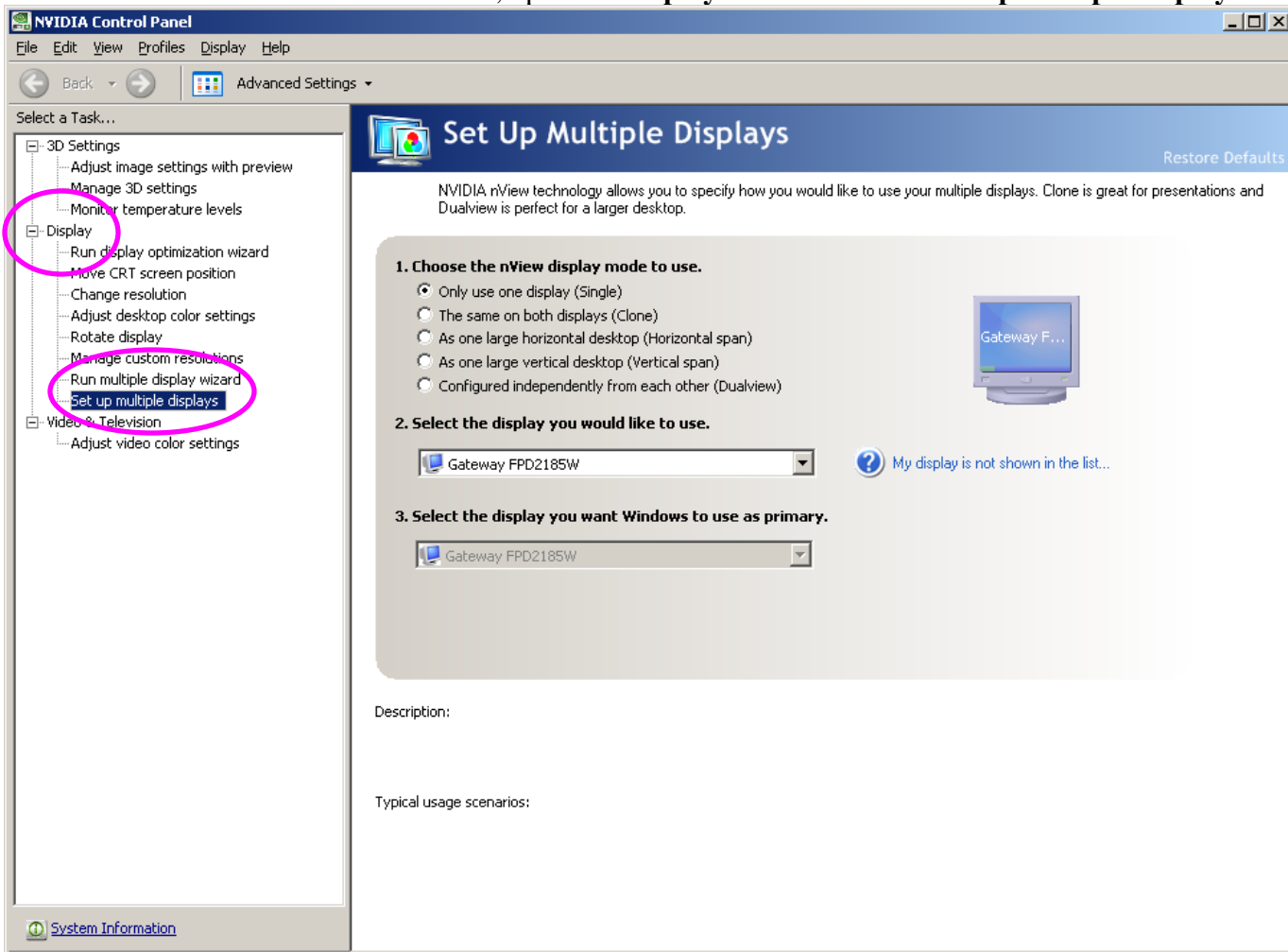
1. Open the Control Panel Start -> Control Panel
2. Double click **NVIDIA Control Panel** icon



3. If you get the window below, select **Advanced Settings** then press **OK** (Please note that this step is sometimes assumed by the software.)

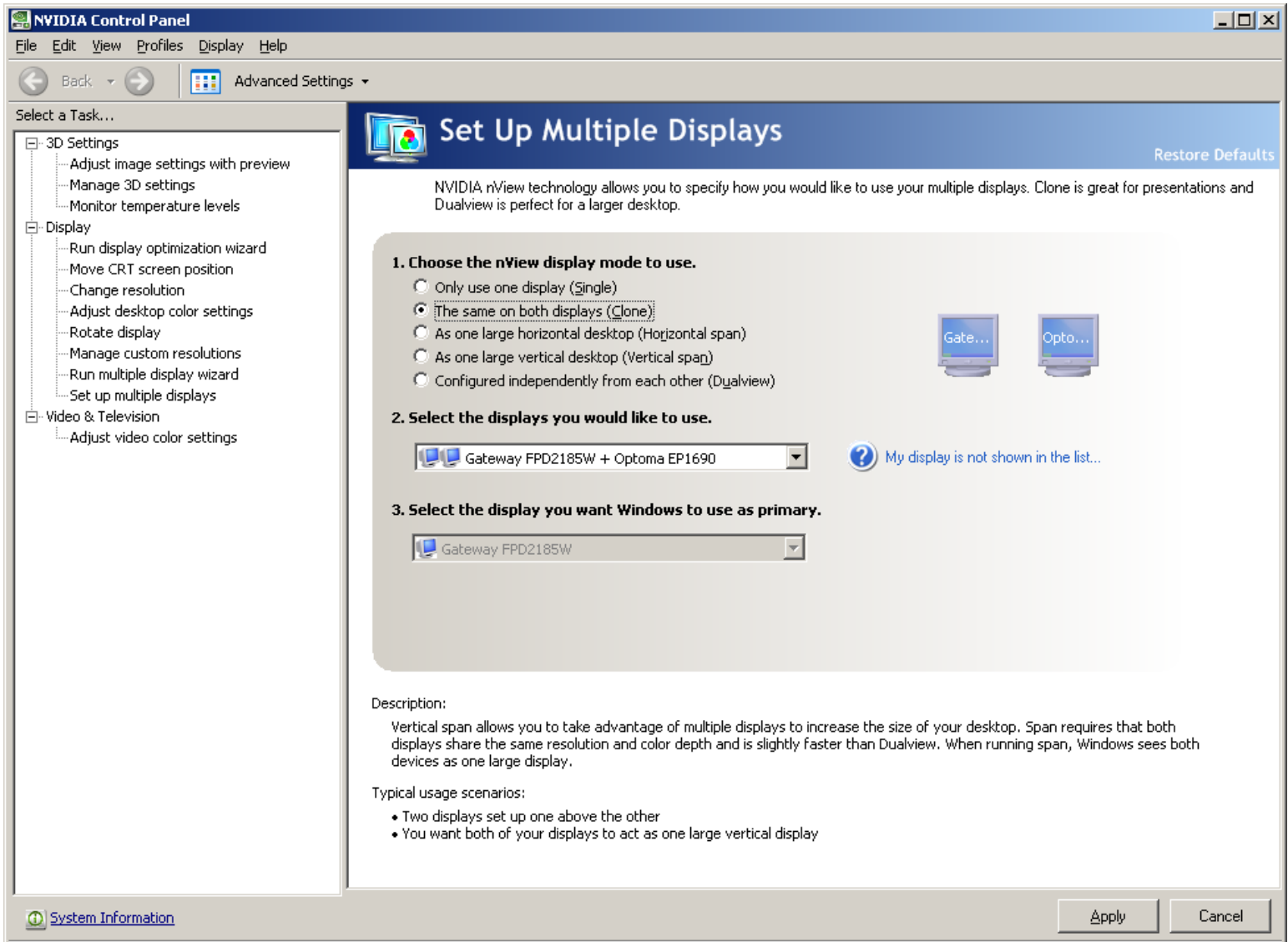


4. From the NVIDIA Control Panel, open the **Display** folder and select **Set up multiple displays**

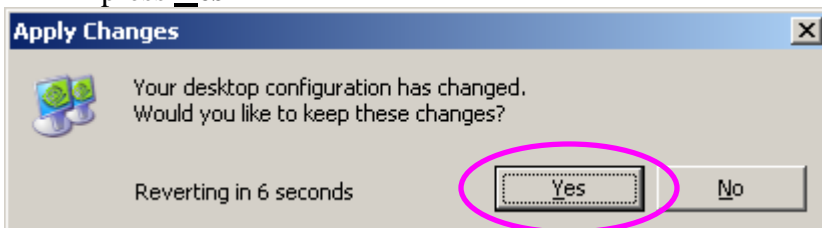


5. Change the following

- **Choose the nView display mode to use.** And select the radio button option **The same on both displays (Clone)** this should cause
- **Select the displays you would like to use** to now show **Gateway FPD2185W + Optoma EP1690** and
- **Select the display you want Windows to use as primary.** Should now default to **Gateway FPD2185W**



6. Please press **A**pply, your screen will flicker and when asked if you would like to keep these changes please press **Y**es



You have now successfully cloned the monitor screen and projector and can close the two control panels by right-clicking on the small x in the upper right-hand corner of each panel.