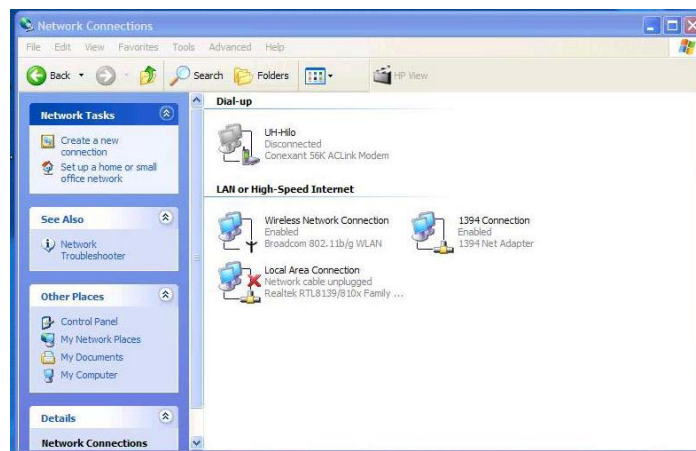


# UHH Wireless Network System

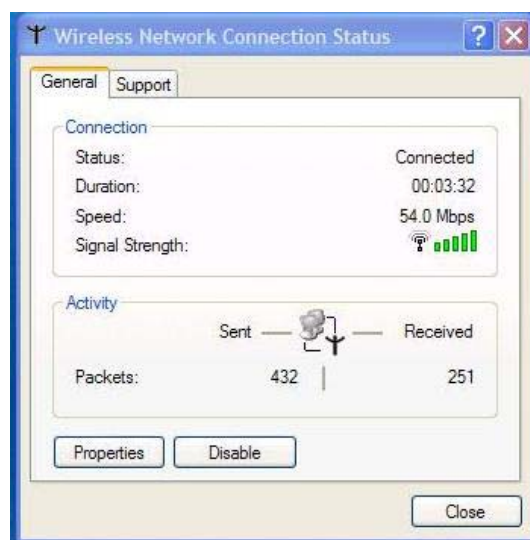
The UHH Wireless Access system consists of 802.11b and 802.11g access points situated in various locations around campus as well as wired ports in UCB classrooms. The system is open for use by any UH Student, Faculty or Staff member. The only requirement is that you have a valid MyUH account or a Hawaii.Edu email account and a computer with either an 802.11b or 802.11g wireless card/built-in.

## Wireless Internet Connection Setup

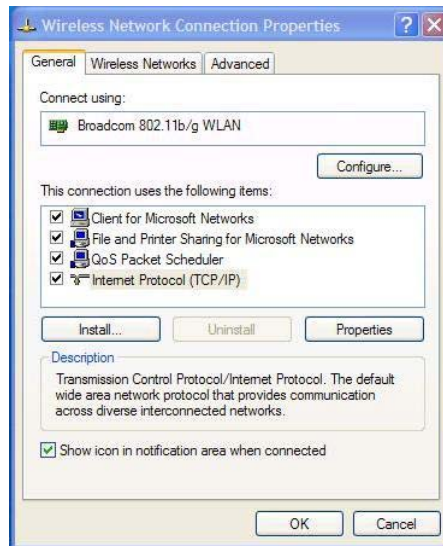
Most computers will work with this system “out of the box”. To check your wireless network connection settings, open Network Connections (usually located in the Control Panel).



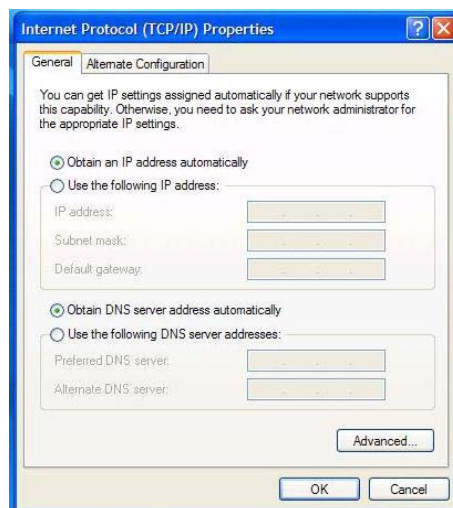
Double click on Wireless Network Connector or whatever your wireless connection is called to bring up the Wireless Network Connection Status window.



Click on the Properties Button to bring up the Wireless connection Properties window.



Double Click on Internet Protocol (TCP/IP) to bring up the Network Protocol (TCP/IP) Properties window.

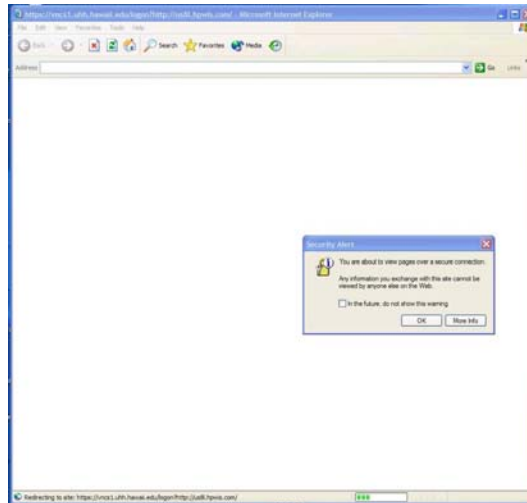


Make sure that the “Obtain an IP address automatically” and the “Obtain DNS sever address automatically” are both selected. At this point you are ready to connect to the wireless network on campus.

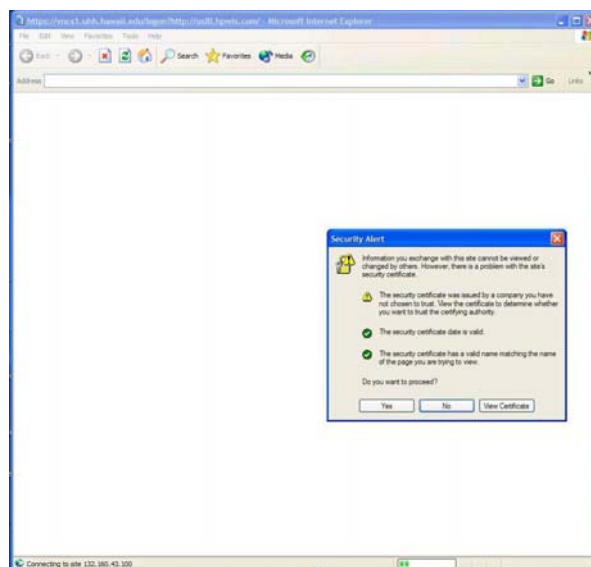
## Getting Access to the Wireless Network

Even though your wireless connection icon or status page will show that you are connected to the wireless network, you will be unable to access any network services until you authenticate with the system.

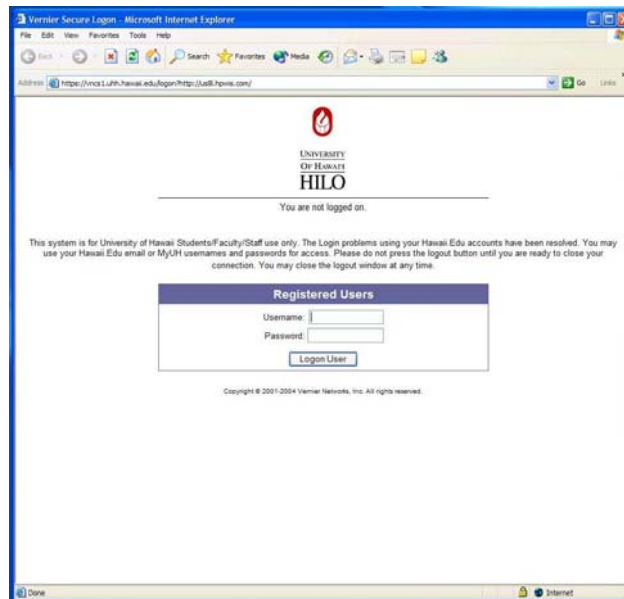
To authenticate with the system you need to open any web page using any browser. The system will intercept your request and warn you that you are about to be redirected to a secure page.



Click the OK button and you will then be presented with a warning about the certificate. At this time please just accept the certificate. The warning is generated by the web browser not recognizing the issuer of the certificate (in this case the manufacturer of our authentication system). There is no danger in accepting this certificate and you will be unable to proceed with authentication unless you accept it.



After accepting the certificate you will be presented with our systems log-in screen.

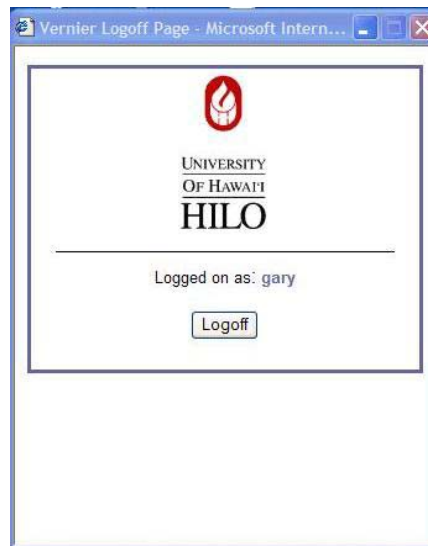


Please use your MyUH or Hawaii.edu email account username and password (do not put the @hawaii.edu in if using your email username). If you enter a valid username/password you will then be redirected back to the original page that you requested.



You may get a window telling you that you are about to leave a secure connection, this is normal and you should just click the OK button if it appears. You are now authenticated to the system and have full

network access. You may close your browser window if you wish it is not required to maintain network access. At this time you will also see a “Logout” page open.



You use this page when you are finished using the wireless system. You may close this window if you wish. The system will automatically log you out after it has lost contact with your computer after a designated length of time. Please do not click the logout button until you are finished as it will cut you off from the network and you must then re-authenticate to get access.

## Wireless Coverage Areas

For the initial phase of the Wireless Access System the following areas have had access points installed:

Mookini Library (coverage should include the Lanai area)

Lava Landing (coverage should include the seating areas just outside)

Campus Center Plaza (coverage extends to the green areas immediately adjacent)

UCB 100, 111, 112, 113, 114, 115 and 118

Ho`o Ulu Terrace (UCB)

Computing Center (some of the green areas Makai and Hamakua of the center)

The Housing Office has installed access points in some of their common areas, please check with them for the exact locations.

Wired Ports are available in the following areas:

Mookini Library

UCB 100

UCB 111

UCB 112

UCB 113

UCB 114

UCB 115

UCB 118

If you have any questions or suggestions for areas that require wireless coverage please send them to Gary Nekoba, [gary@hawaii.edu](mailto:gary@hawaii.edu)