



UNIVERSITY  
of HAWAII  
HILO

# Around da House

## Weekend Trips

For more information and a complete listing of trips for the semester, visit our website at <http://www.uhh.hawaii.edu/studentaffairs/housing/reslife/Activities.php>

## Upcoming Events:

Volcano Park Bike Ride to the Ocean	9/20/08
Hapuna Beach Trip	9/21/08
Place of Ref- uge & Honaunau Snorkeling	9/27/08
VIS on Mauna Kea	9/28/08
Kua Bay Beach Trip	10/4/08
Pololu Valley Hike & Keokea Beach Park	10/5/08

## This past weekend...

**It was cold. Very cold. The Mauna Kea Visitor Center sits at an elevation of 9,300 feet.** This past Sunday two van loads of students left at 3:00 PM to drive to the VIS. It took everyone a little while to get used to the colder temperatures (about 35 degrees Fahrenheit) and lower oxygen content of the air. After a round of hot chocolate and some time to acclimate, however, all was well.

As a group the students hiked up Pu'u to watch the sunset from above the clouds. Later, back down at the VIS, many people ate a bowl of warm noodles and then listened to a talk about the stars by one of Mauna Kea's experts.

If you missed out on the trip there is another one planned for Sunday evening on September 28th.

Our other trip for the weekend



Students at the entrance to the Visitor Center

occurred on Saturday. 97 Housing residents were able to venture to Kona for a memorable ride in an Atlantis Submarine. Housing's own Mackenzie Austin and Jacob Otwell went SCUBA Diving near the sub and were able to take pictures of students through the windows (to see the photos visit our website; it's listed on the left under "Weekend Trips").



Students inside the submarine on Saturday

### DO NOT FORGET

Housing applications for the Spring semester of 2009 are being accepted NOW.

Pick up applications at the Housing office.



## —UHH Writing Center—

A new UHH Writing Center will be available for use as of Monday, September 8th. The Center, located in the library in room 239, will be open Monday-Friday and closed on holidays. Operating hours are as follows:

Monday: 9:00 AM—10:45 AM; 12:30 PM—1:00 PM

Tuesday: 10:00 AM—12:30 PM

Wednesday: 9:00 AM—10:45 AM; 12:30 PM—1:00 PM; 5:00 PM—6:00 PM

Thursday: 10:00 AM—3:00 PM

Friday: 9:00 AM—2:00 PM

There will be an updated schedule posted soon.

If you have any questions or concerns, please contact Karla Hayashi through e-mail at [karlah@hawaii.edu](mailto:karlah@hawaii.edu) or by calling 974-9545.



## Recycling Bins & Kress Movie Nights

The free movie nights to Kress Cinemas every Wednesday are sponsored by the recycling bins located around the Resident Halls. We currently only maintain bins for plastic and aluminum. Resident Life Programming is pleased to announce that, for the first time, bins meant for glass bottles are going to be used. They are not out yet, but will be in the near future. Keep a look-out for them!

Even if you are not interested in the movie nights it is still beneficial to recycle

old items as it helps to save the environment.

There are a couple of things to note when using the recycling bins:

- 1) Check to make sure you are tossing your old container into the correct bin. If you don't put plastic with plastic and aluminum with aluminum, the containers may not reach their recycling destination.
- 2) Ensure that the containers are empty before recycling them. Fluid in the containers can create a foul-smelling area around the bin and may inhibit

recycling abilities.

- 3) Be sure to remove the caps from plastic bottles before putting the bottles in the bins. This stops air from being trapped in the bottle at the recycling plant.

We thank you in advance for your recycling efforts!

## eREFUND FOR STUDENTS

If you are waiting for a refund from the University of Hawai'i, why wait for your check in the mail? Sign up online to have your refund deposited directly into YOUR bank account!

### QUICK

You will have access to funds sooner. No more waiting for the mail.

### SECURE

eRefunds is added protection against mail theft or time delays from lost checks.

### CONVENIENT

UH will deposit your refund directly into your bank account. An e-mail will be sent to you when your refund is processed.

### CONFIDENTIAL

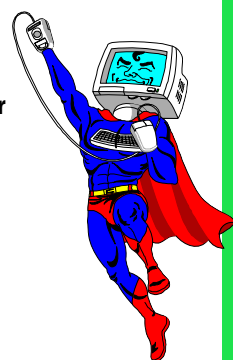
We maintain the strictest confidentiality regarding your bank information.

### HOW TO ENROLL IN eREFUND IT'S EASY

- 1) Log into the MyUH portal
- 2) Click on "Sign-up for eRefund"
- 3) Click on "Refund" tab at the top and follow the instructions

### CONTACT US

Contact the business office for help or e-mail [billpayment-1@hawaii.edu](mailto:billpayment-1@hawaii.edu)



## Lost and Found

All lost and found items from Resident Life Programming trips will be placed in the office in Ikena lounge. Our current collection of items consists of:

A hat from the Hapuna trip.

Claim items by coming to the office and providing a description.

## LGBTIQ

Serving the Lesbian, Gay, Bisexual, Transgender, Intersex, Queer and Questioning University of Hawaii at Hilo Campus Community and Beyond.

In addition to trips and activities (such as hiking at Volcanoes National Park on September 20th), the LGBTIQ Club hosts weekly meetings. The next meeting is Tuesday, September 16th, from 5:00 to 6:00 in K105.

## Student Health 101

### WIN A FREE IPOD!

Student Health 101 is now giving away five free iPods to readers of the September issue. Students must also register to win. To access this issue visit <http://issue.sh101digital.com/showmag.php?mid=hdqtg#/page2/>



Articles contained in this publication include:

Roommate Survival Guide

Build Fitness into Your Daily Life

Master the College Juggling Act—Great Grades and Good Times

Sexual Assault: What Women—And Men—Need to Know

Food Allergies: Nothing to Sneeze At

## KIPUKA NATIVE HAWAIIAN STUDENT CENTER

The Kipuka Native Hawaiian Student Center is offering peer tutoring in the areas of Math, English, Writing and Science.

M: 8:00 AM—10:30 AM

T: 8:00 AM—1:30 PM

W: 8:00 AM—11:30 AM; 4:30 PM—8:00 PM

R: 8:00 AM—12:30 PM; 5:00 PM—8:00 PM

F: 8:00 AM—11:30 AM

For more information visit <http://kipuka.uhh.hawaii.edu/index.html> or call 933-0897.

### About the Editor:

Amanda Winburn enjoys drinking coffee and is a Sophomore attending UH Hilo. To contact her, send an e-mail to [winburn@hawaii.edu](mailto:winburn@hawaii.edu)