



UNIVERSITY

OF HAWAI'I

HILO

**CHANCELLOR'S SCHOLARSHIP
APPLICATION**

A Four-Year Tuition Scholarship



Dear Prospective Student:

I am excited to invite you to apply for the Chancellor's Scholarship at the University of Hawai'i at Hilo. As the Chancellor at UH Hilo, I want to encourage you to become a part of our strong academic community. In Hilo you will experience small classes and have many opportunities to interact with our outstanding faculty, whether it be in class, on a research project or just an informal chat after class.

The prestigious Chancellor's Scholarship was created to attract outstanding graduates from Hawai'i high schools to UH Hilo. Each year some of the best high school graduates in the state are awarded this *four-year scholarship*. Students like you have distinguished themselves through their hard work, dedication, and leadership abilities. At UH Hilo, we look forward to playing a significant role in your continued academic and leadership development.

We hope you will consider joining this talented group of young men and women.

Sincerely,

A handwritten signature in black ink that reads "Rose Tseng". The signature is written in a cursive, flowing style.

Rose Tseng
Chancellor & Senior Vice President
University of Hawai'i at Hilo

**University of Hawai'i at Hilo
Chancellor's Scholarship**

A Four-Year Tuition Scholarship

ELIGIBILITY CRITERIA

- Top 10% of graduating class from a Hawai'i high school
- GPA of 3.5 or better
- Demonstrated leadership and/or community service

CHANCELLOR'S SCHOLARS WILL BE EXPECTED TO:

- Maintain a 3.25 cumulative GPA
- Earn 24 credits per year
- Enroll as a full-time student
- Participate in leadership activities and/or community service with other Chancellor's Scholars
- Maintain continuous enrollment
- Scholars are encouraged to participate in the National Student Exchange program during their second or third year in college.

APPLICATION CHECKLIST

- Application for admission to UH Hilo (including application fee)
- Official high school transcript
- SAT or ACT scores
- Chancellor's Scholarship application
- Two letters of reference—use attached forms (at least one must be from a teacher or counselor)
- Personal statement

All of the above must be received by January 31.

2008-2009 CHANCELLOR'S SCHOLARS



Krista Dumandan
Kailua HS



Dylan James
Kapaa HS



Justin Lozano
Waianae HS



Kelsea Machida
Kamehameha HS



Erin Mc Iver
Honokaa HS



Jenny Nakano
Pearl City HS



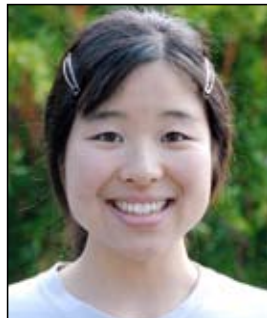
Sean Okimoto
Castle HS



Kimberly Oyama
Lanai HS



Johnny Rivera
Pahoa HS



Chihiro Sasaki
Waiākea HS



Aisha Tanaka
Waiākea HS



Devin Tanaka
Castle HS



Keshia Yorong
Hilo HS